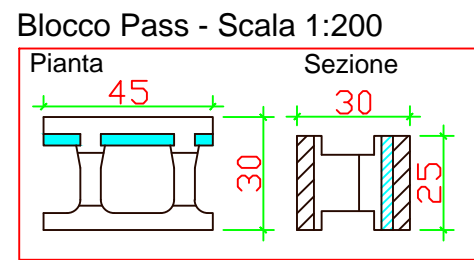
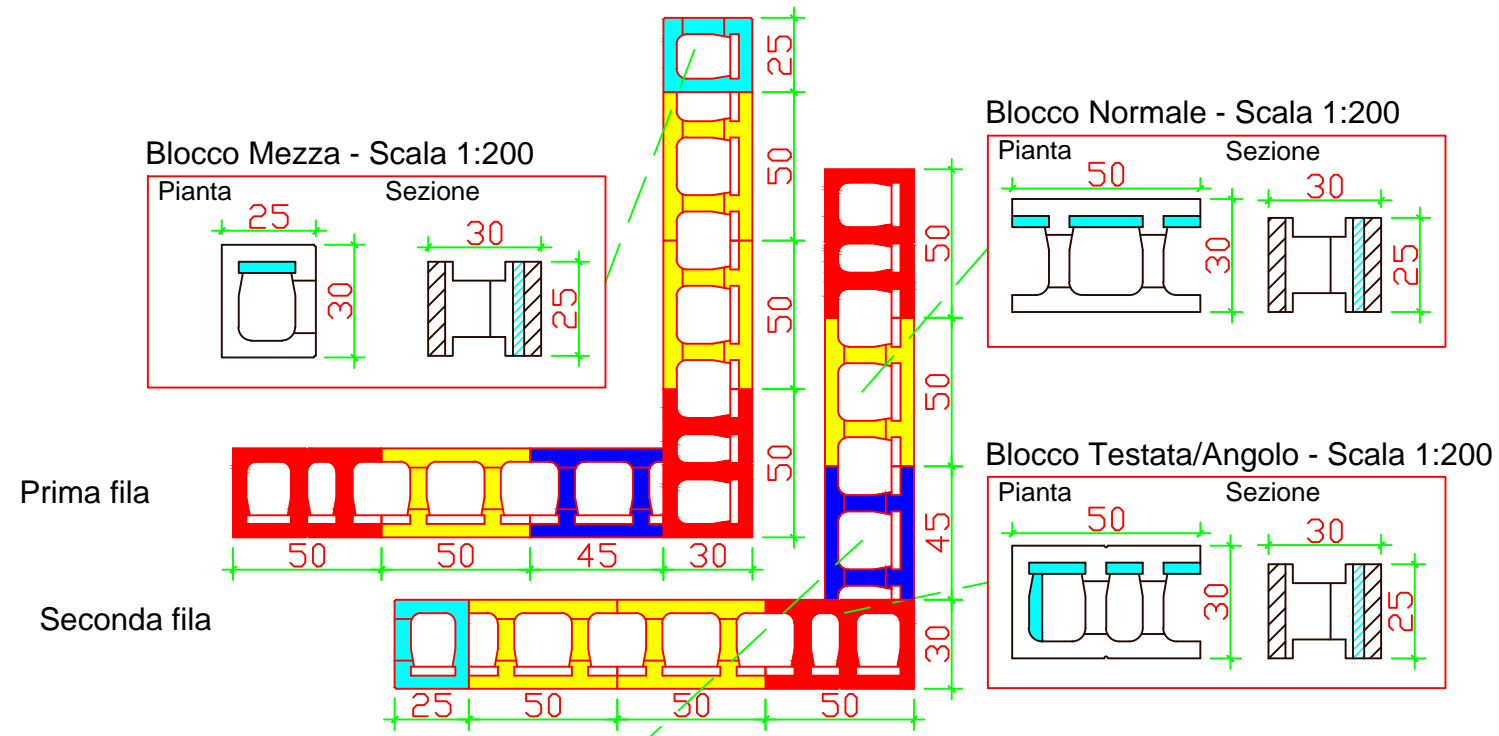
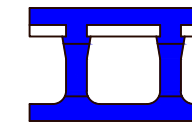
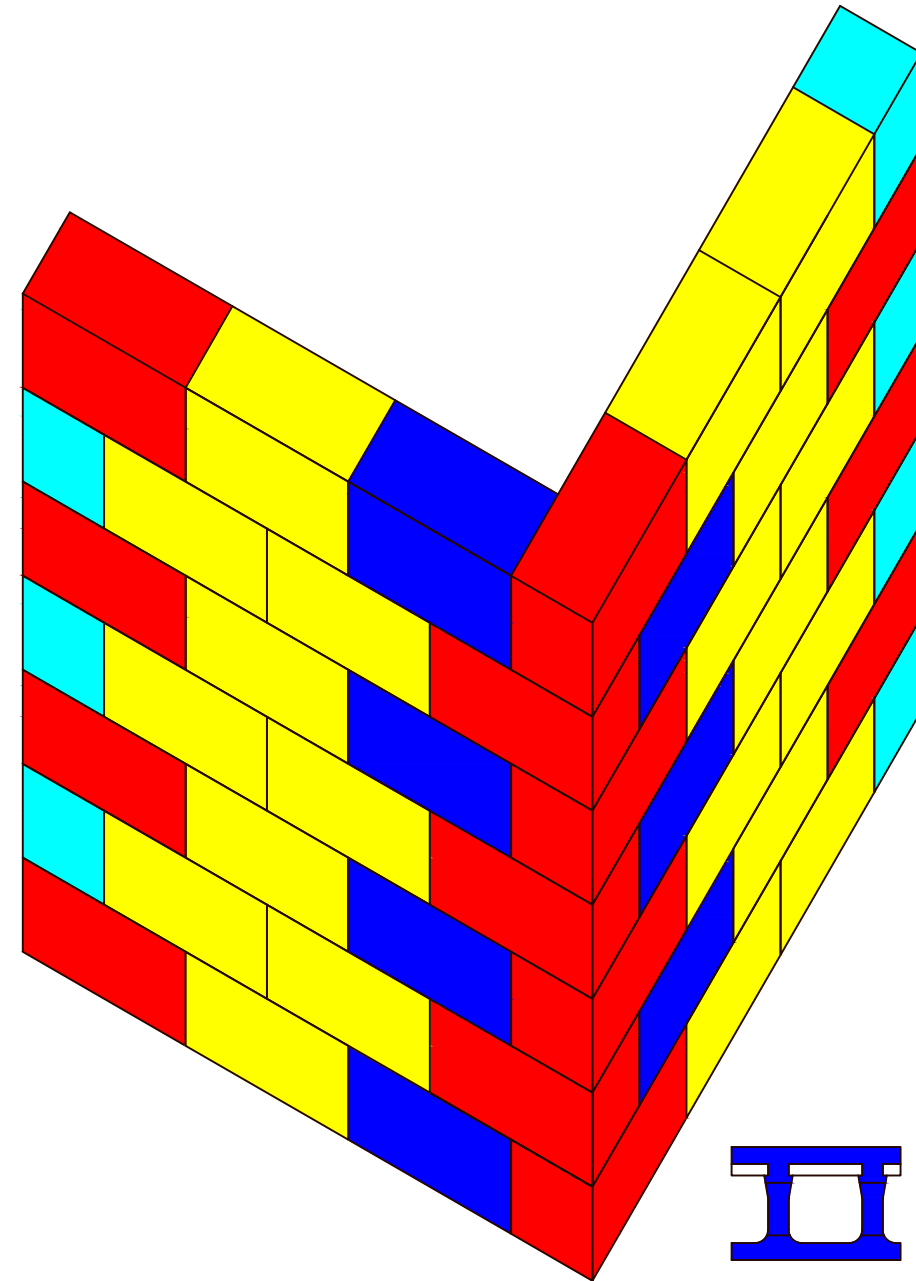
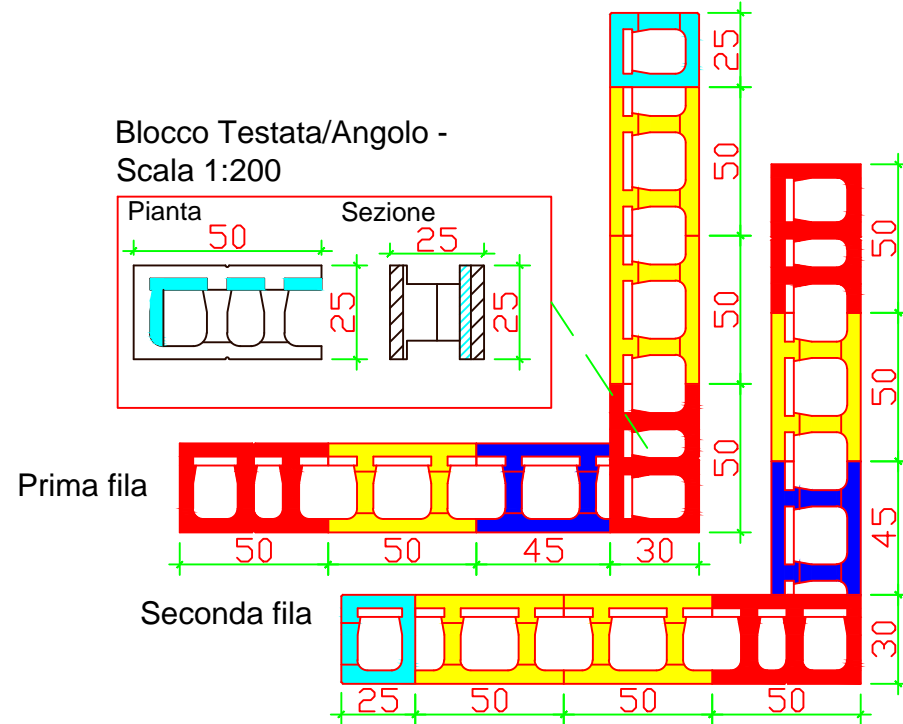


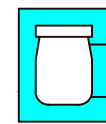
Blocco portante acustico 30 - Angolo esterno



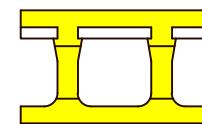
Blocco portante acustico 30 - Angolo interno



Blocco Pass



Blocco Mezza



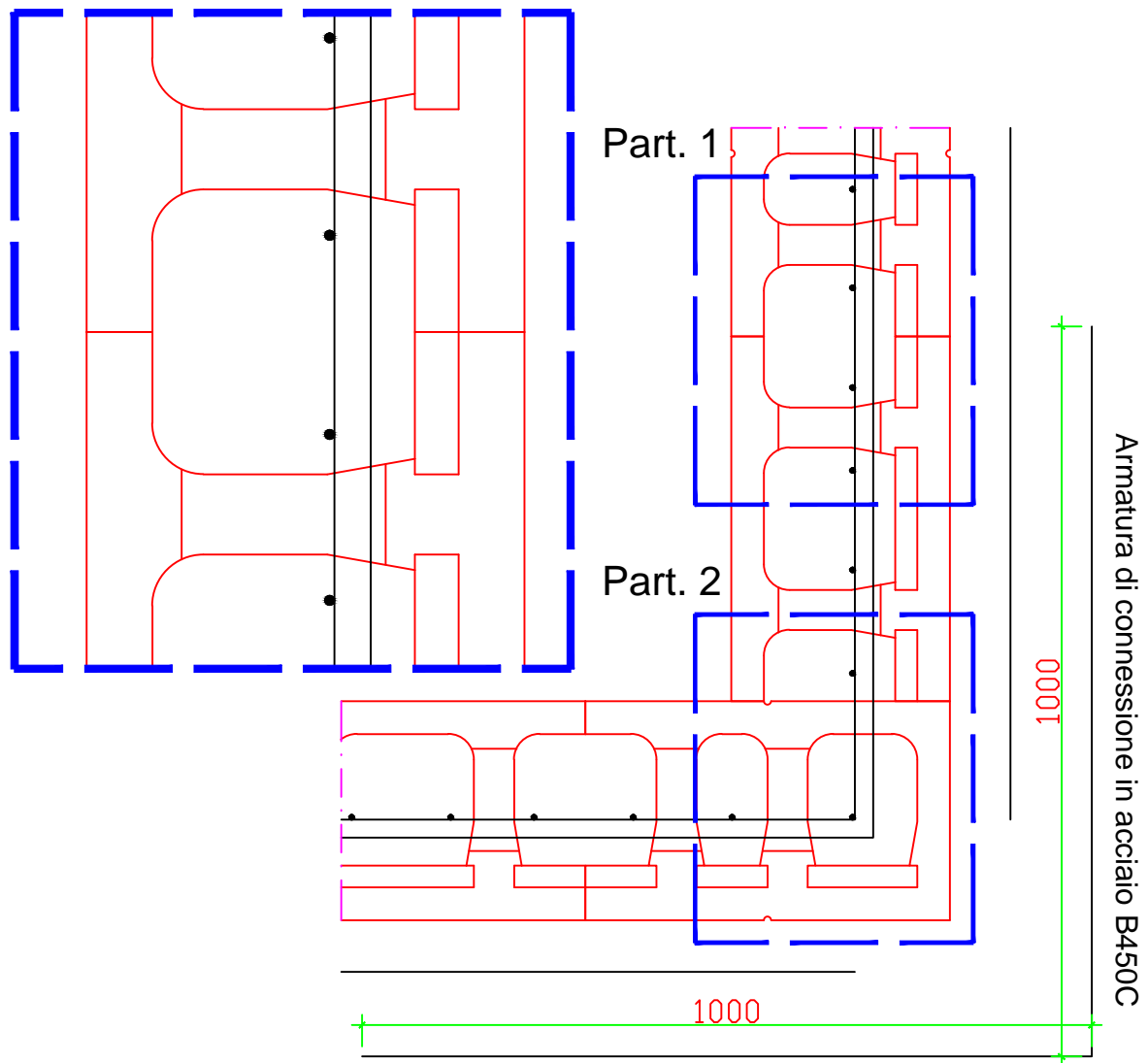
Blocco Normale



Blocco Universale

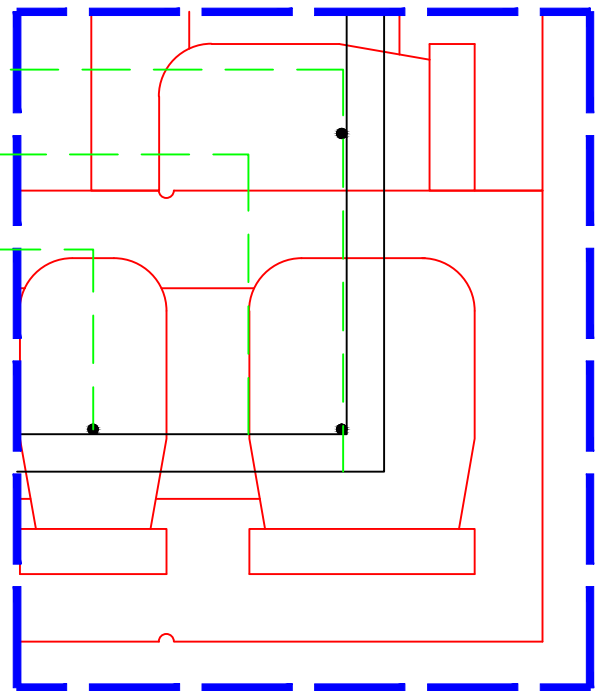
Armatura angolo Blocco Acustico 30 Portante - Scala 1:200

Part. 1 - Scala 1:100

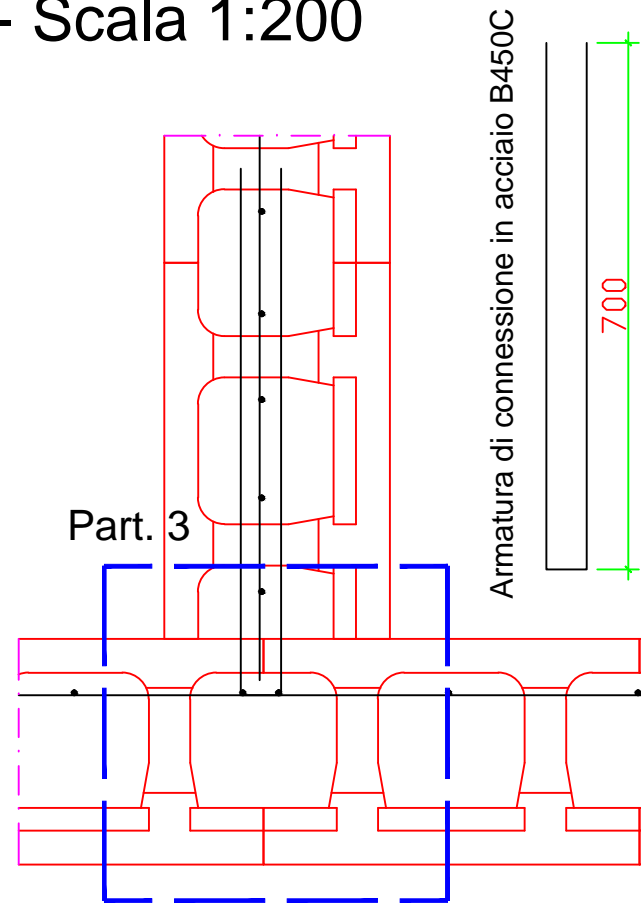


Armatura verticale in acciaio B450C
Part. 2 - Scala 1:100

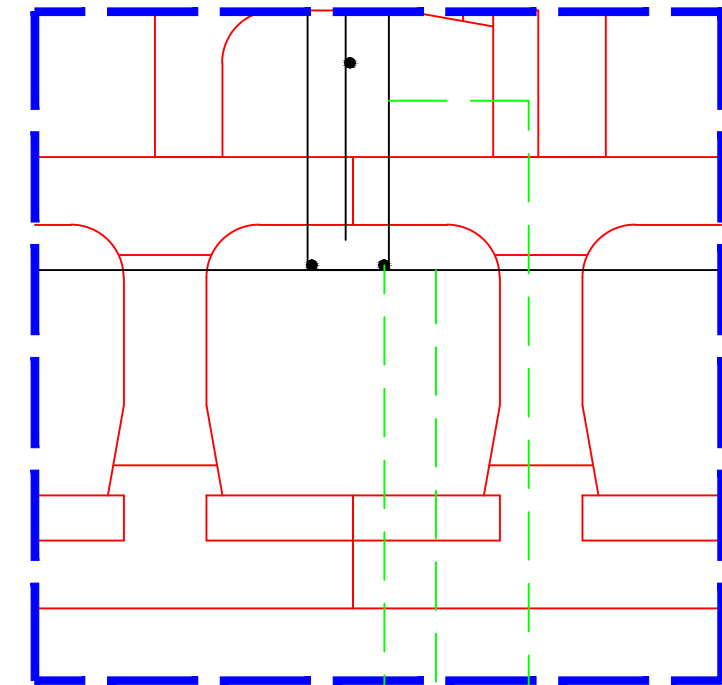
Armatura di connessione in acciaio B450C
Armatura Longitudinale in acciaio B450C
Armatura verticale in acciaio B450C



Armatura angolo Blocco Acustico 30 Portante - Scala 1:200



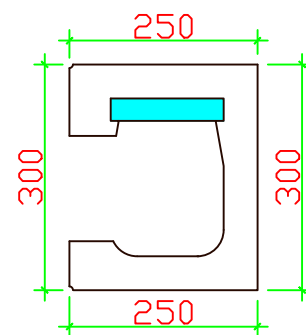
Part. 3 - Scala 1:100



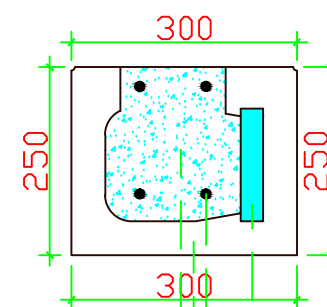
Armatura verticale in acciaio B450C
Armatura Longitudinale in acciaio B450C
Armatura di connessione in acciaio B450C

Architrave Blocco Acustico 30 Portante - Scala 1:100

Pianta



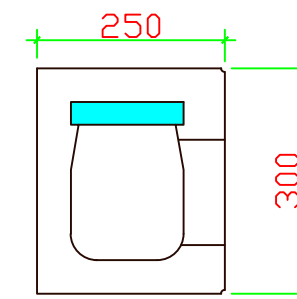
Sezione



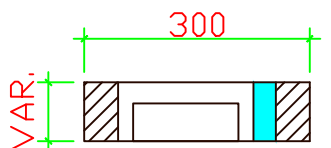
Isolante
Armatura longitudinale in Acciaio B450C
Sezione Blocco Architrave
Architrave gettato in opera

Architrave AG 30 Portante - Scala 1:100

Pianta



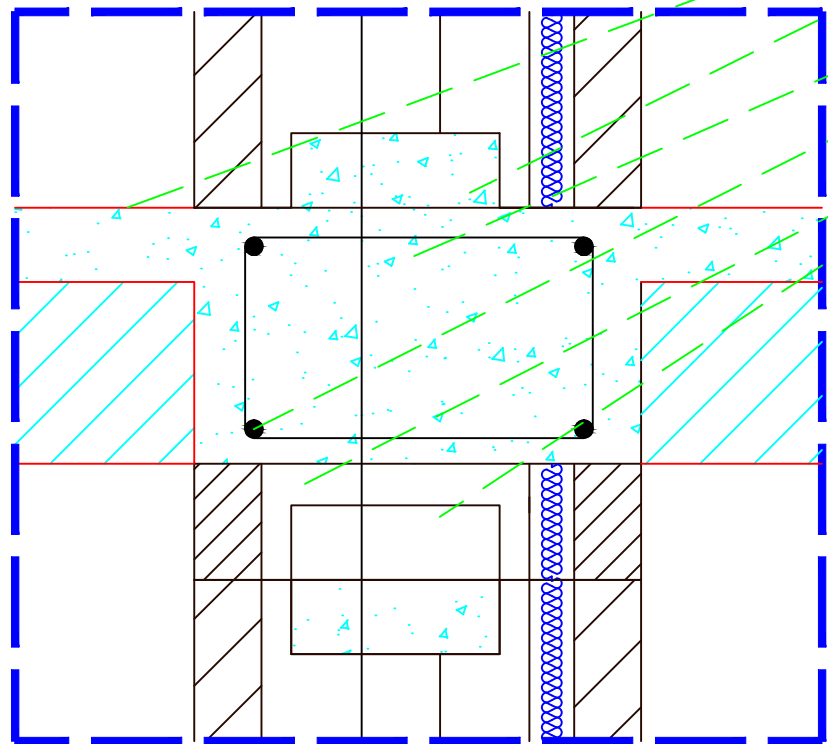
Sezione



VAR.

Blocco Acustico da 30 Portante

Part. - Scala 1:50



Soletta di cls gettato in opera per solaio

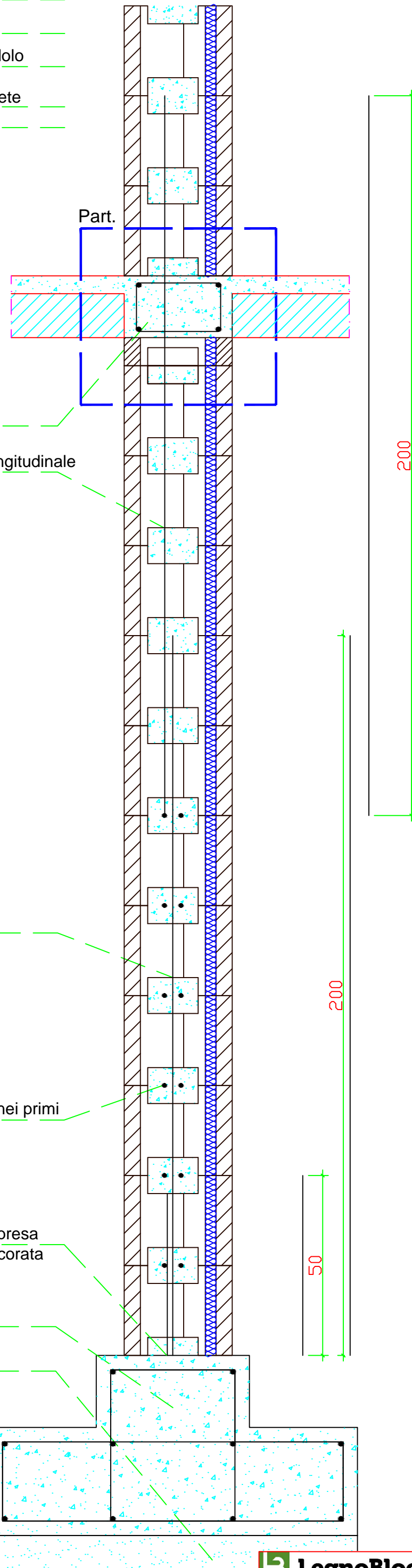
Cordolo perimetrale gettato in opera

Staffa in Acciaio B450C

Armatura longitudinale cordolo
in Acciaio B450C

Armatura longitudinale parete

Blocco Cordolo



Cordolo

Seconda Armatura longitudinale

Prima Armatura longitudinale

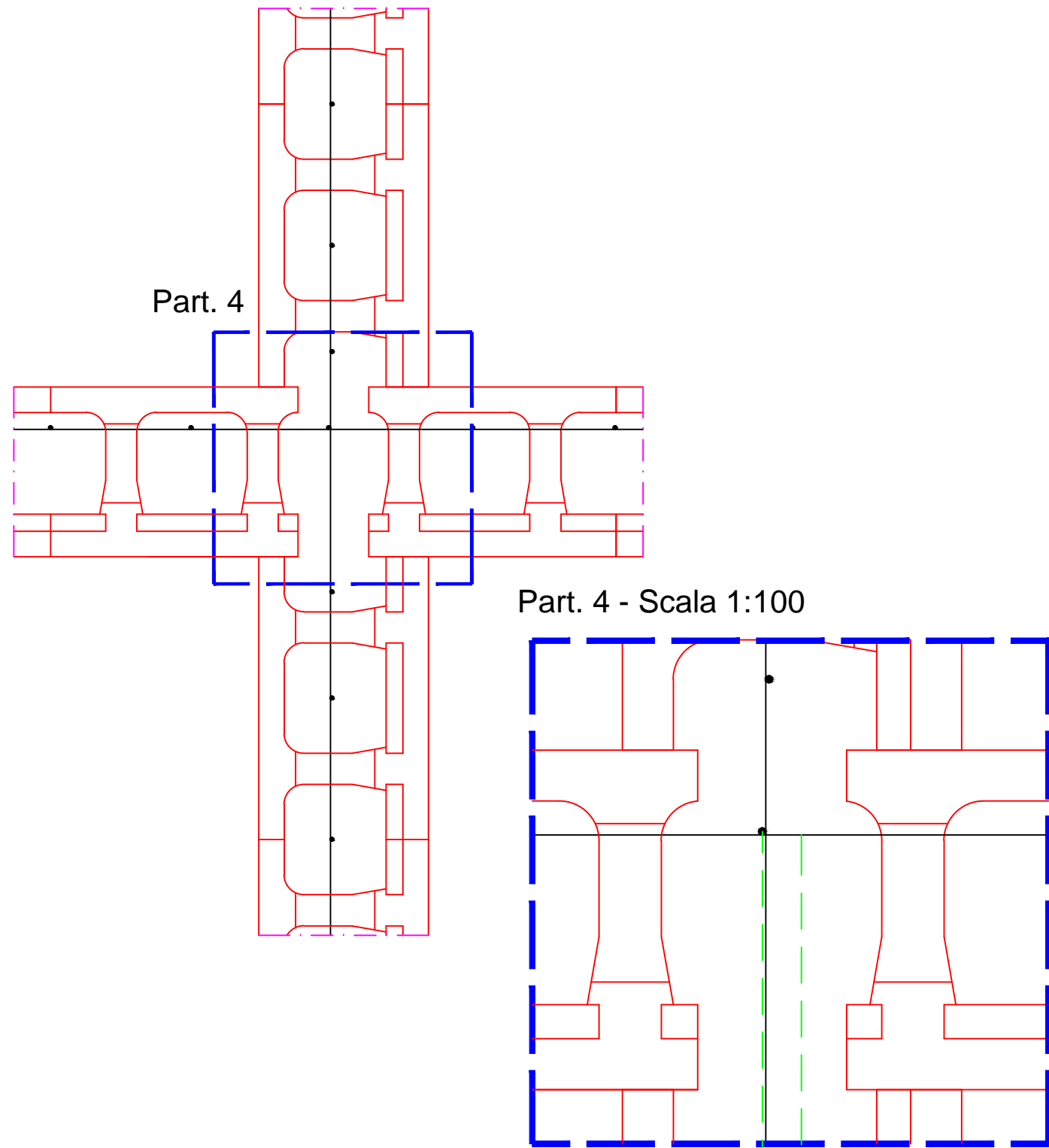
Armatura longitudinale inserita nei primi
6 corsi

Armatura in Acciaio B450C di ripresa
annegata nella fondazione o ancorata
ad essa per mezzo di resine
epossidiche

Fondazione

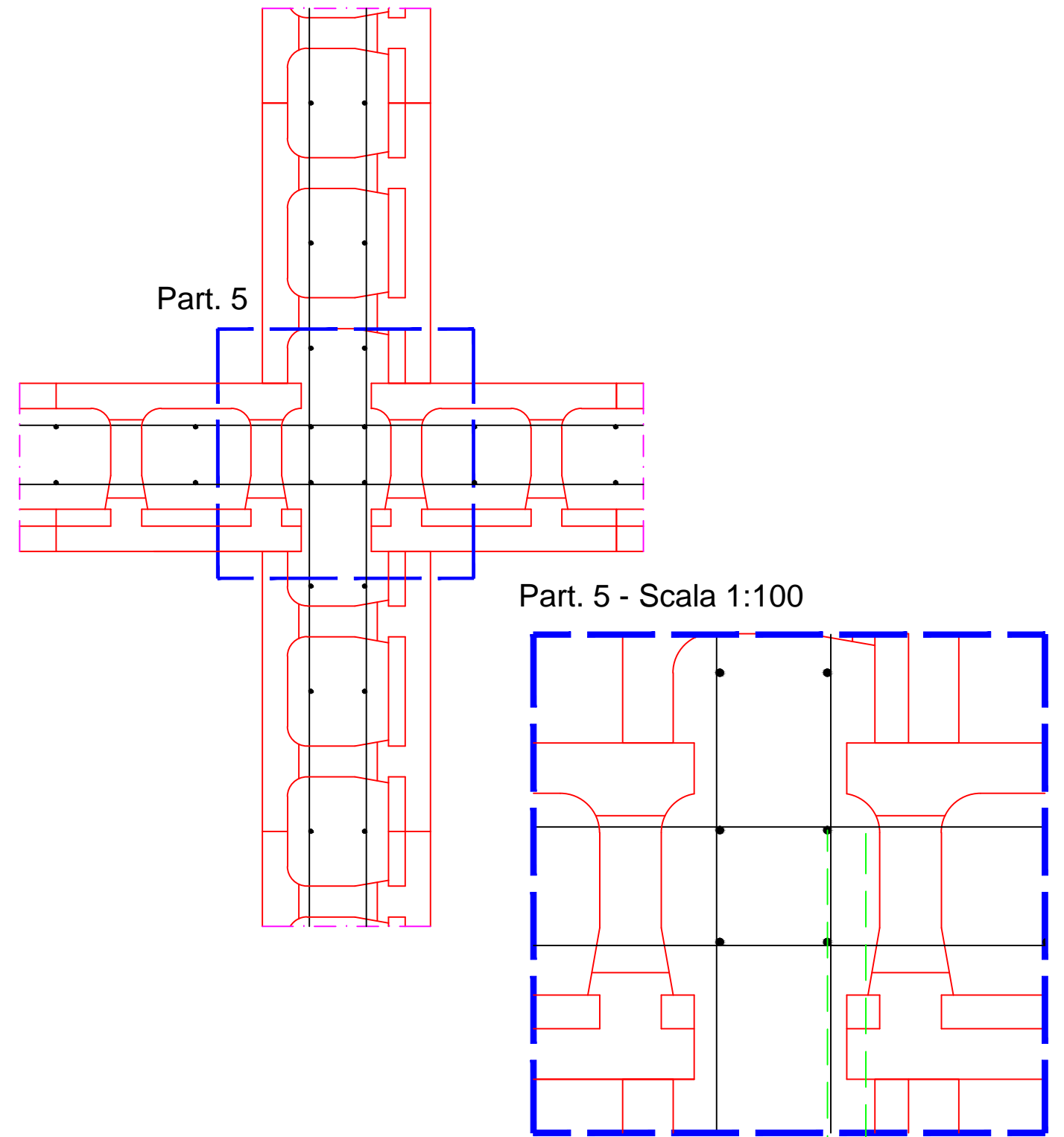
Magrone

Nodo a quattro vie blocco 30 Portante con singola armatura- Scala 1:200



Armatura verticale in acciaio B450C
Armatura Longitudinale in acciaio B450C

Nodo a quattro vie blocco 30 Portante con doppia armatura- Scala 1:200



Armatura verticale in acciaio B450C
Armatura Longitudinale in acciaio B450C