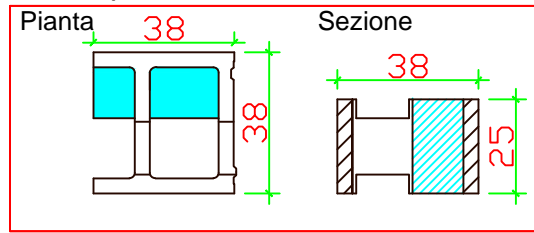
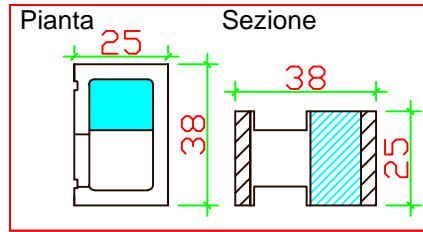


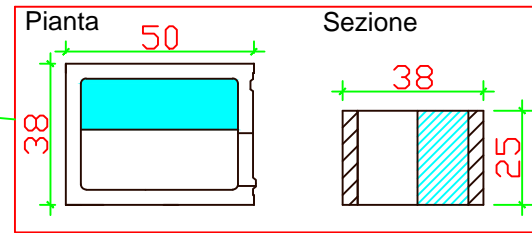
Blocco pass- Scala 1:200



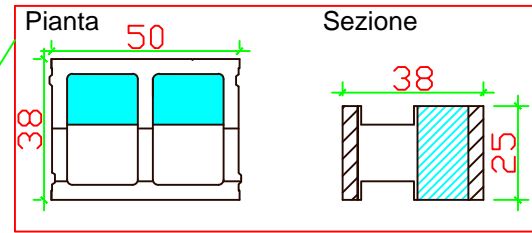
Mezzo blocco- Scala 1:200



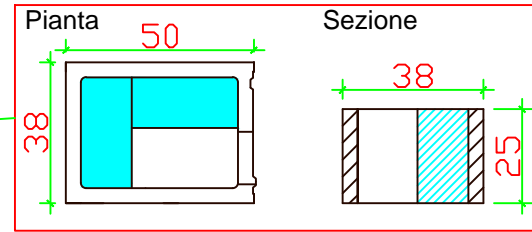
Blocco universale- Scala 1:200



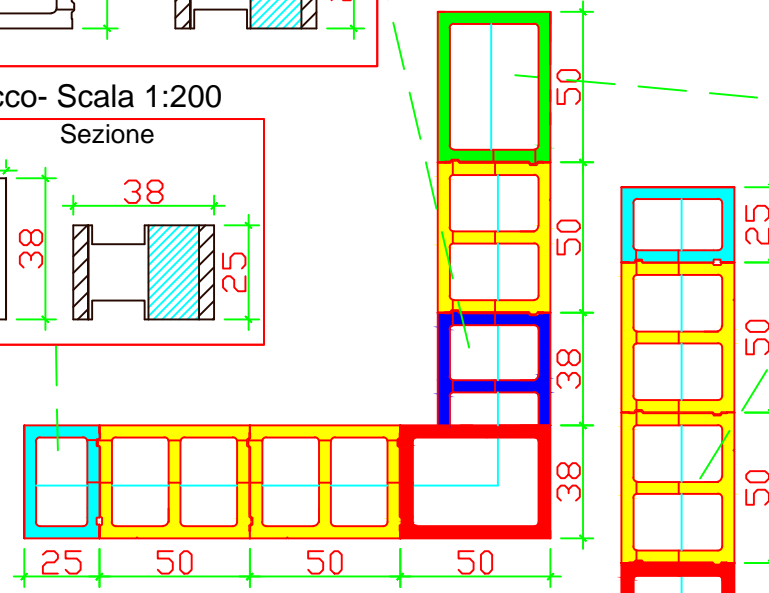
Blocco Normale- Scala 1:200



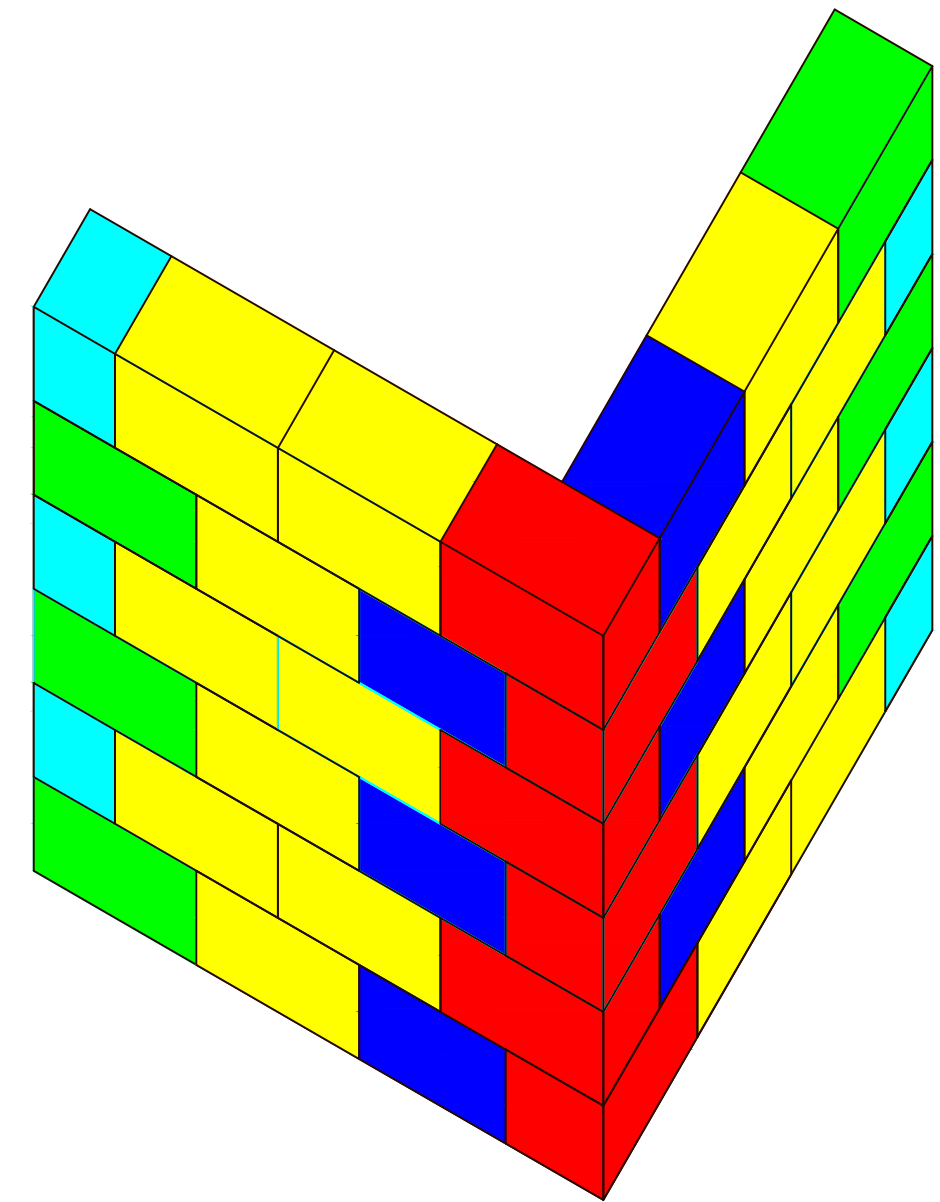
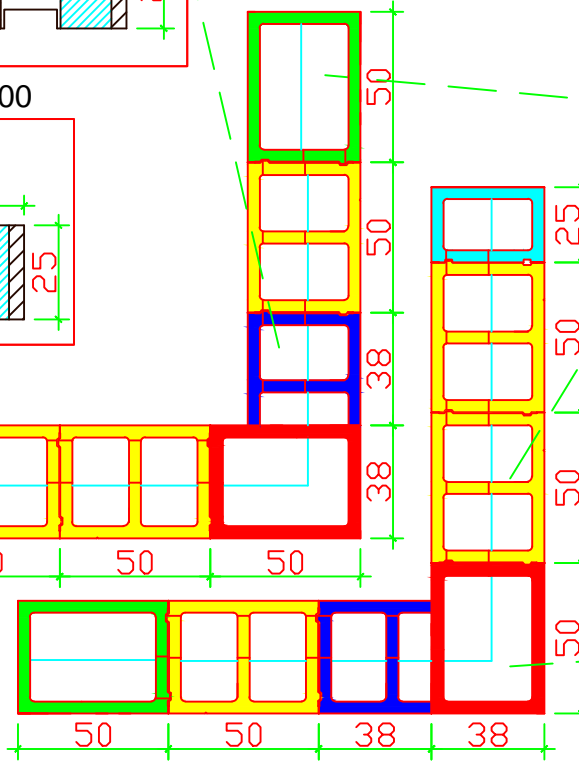
Blocco angolo esterno- Scala 1:200



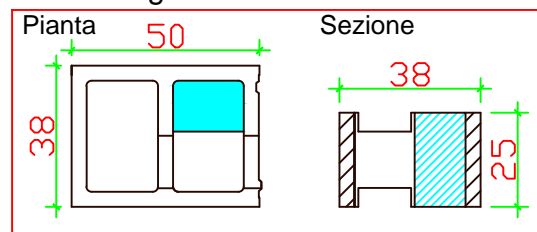
Prima fila



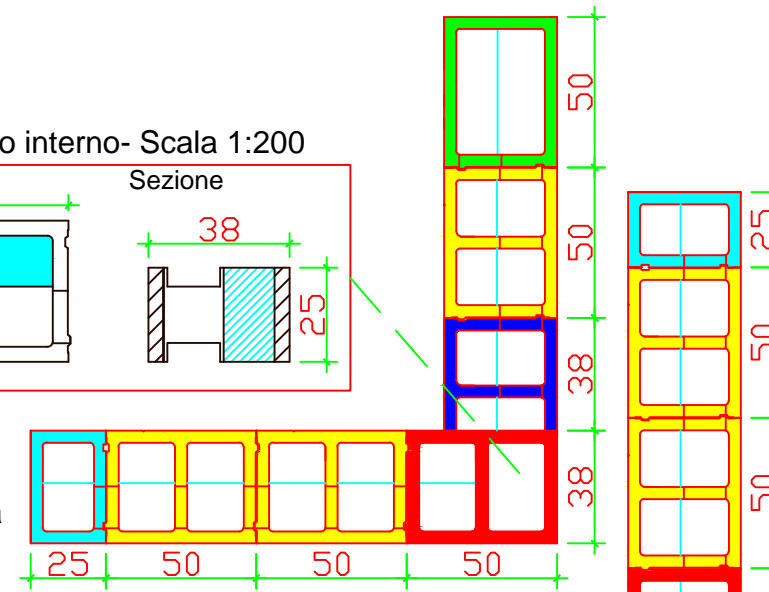
Seconda fila



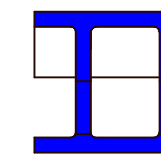
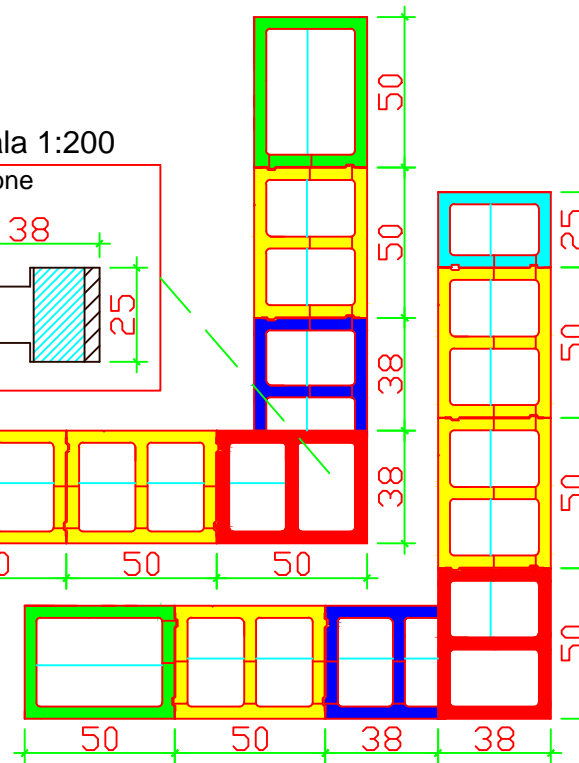
Blocco angolo interno- Scala 1:200



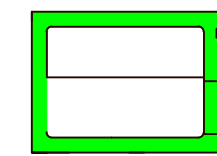
Prima fila



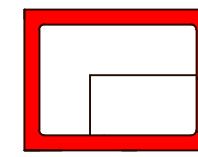
Seconda fila



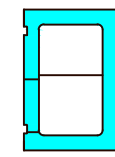
Blocco Pass



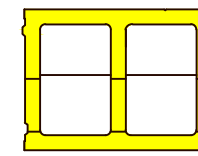
Blocco Testata



Blocco Angolo esterno

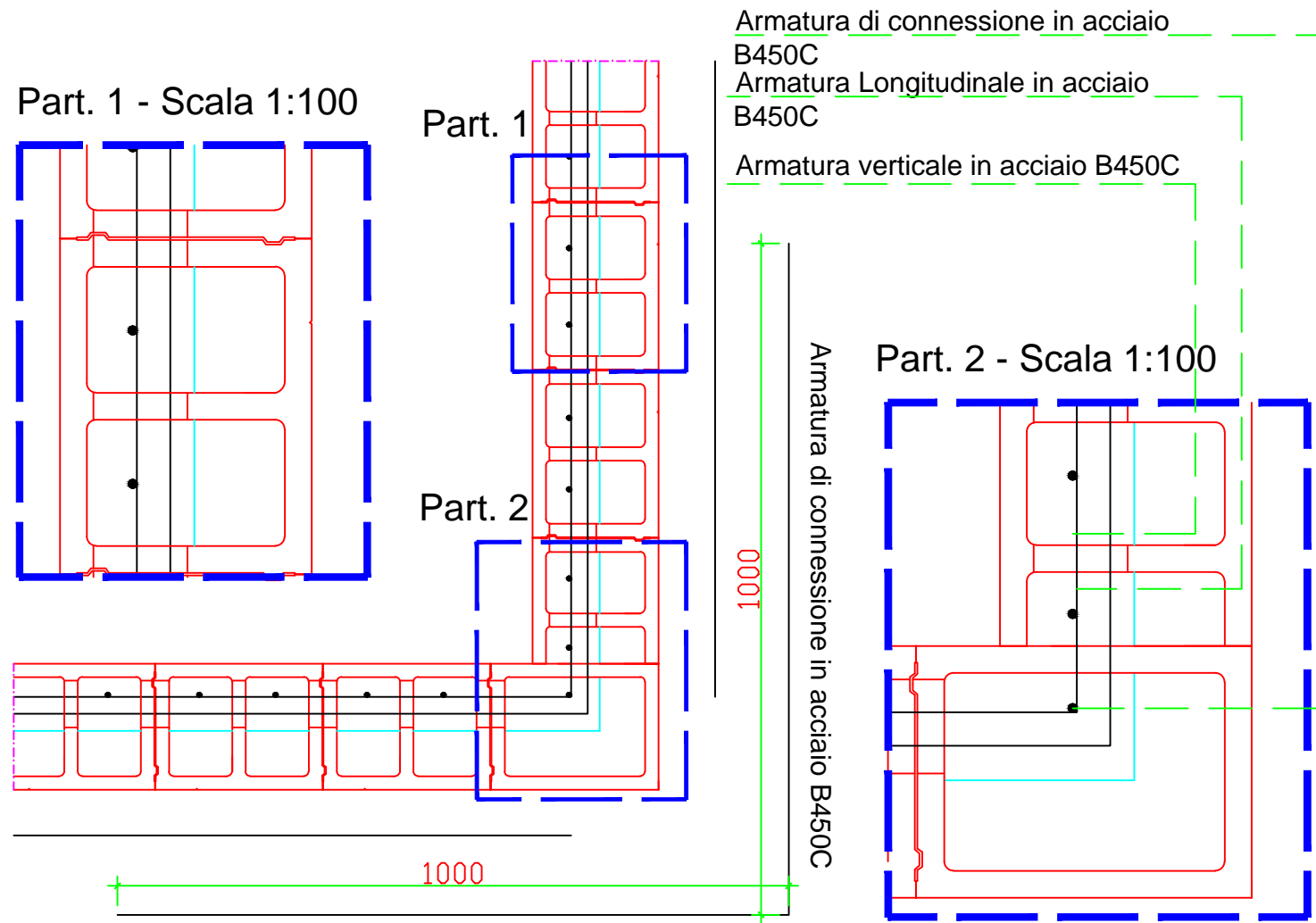


Mezzo Blocco

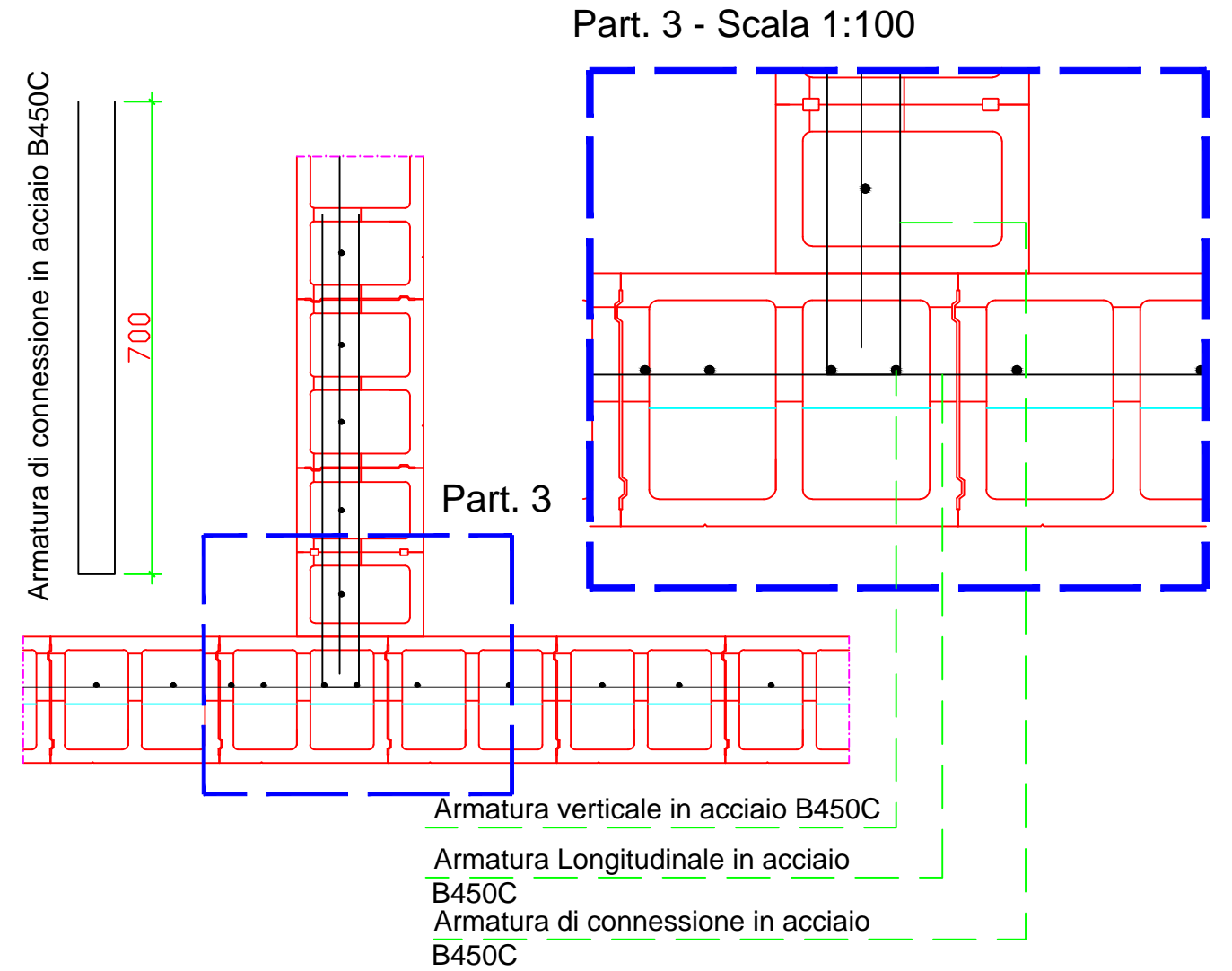


Blocco Normale

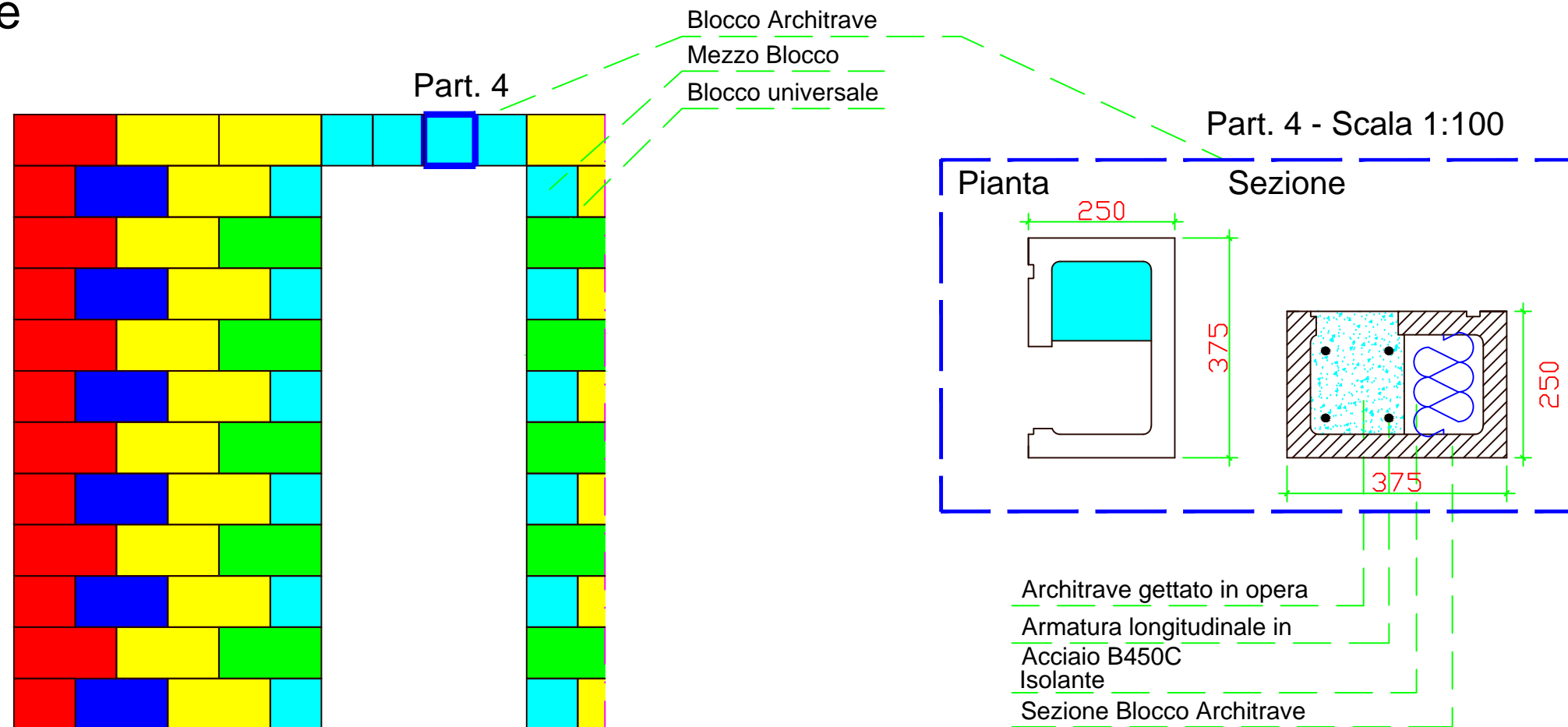
Armatura angolo 38 Portante - Scala 1:200



Nodo a tre vie angolo 38 Portante - Scala 1:200

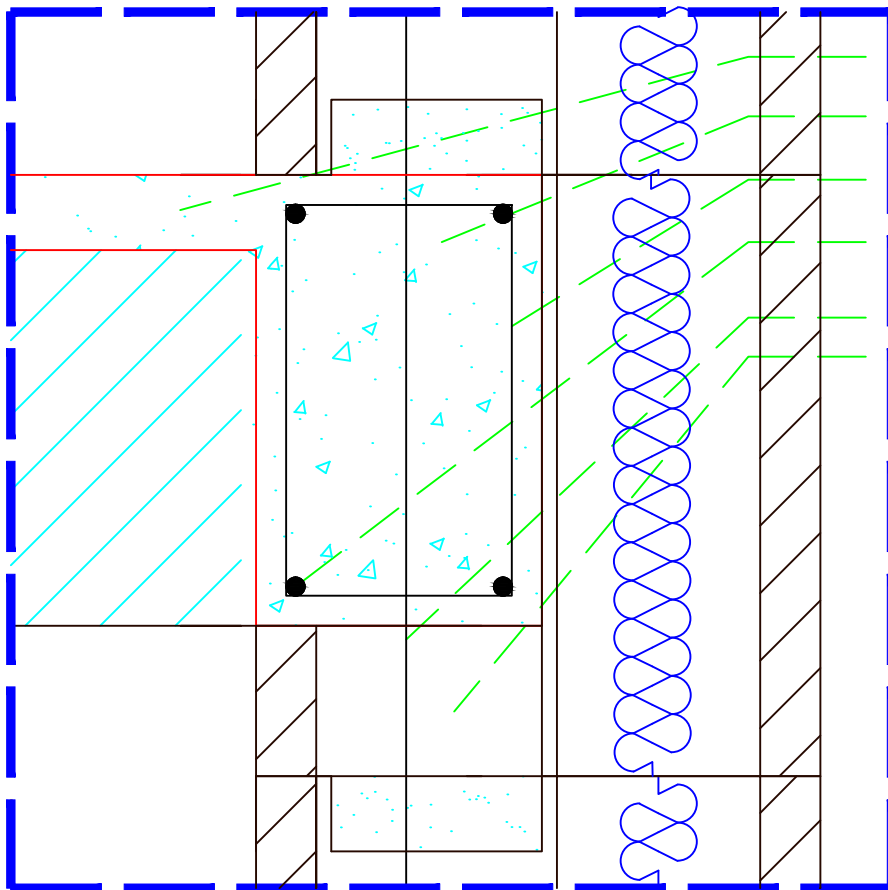


Architrave

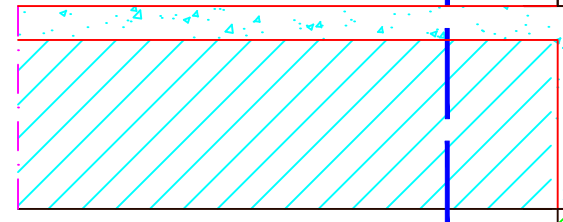


Cordolo 38 Portante

Part. - Scala 1:50

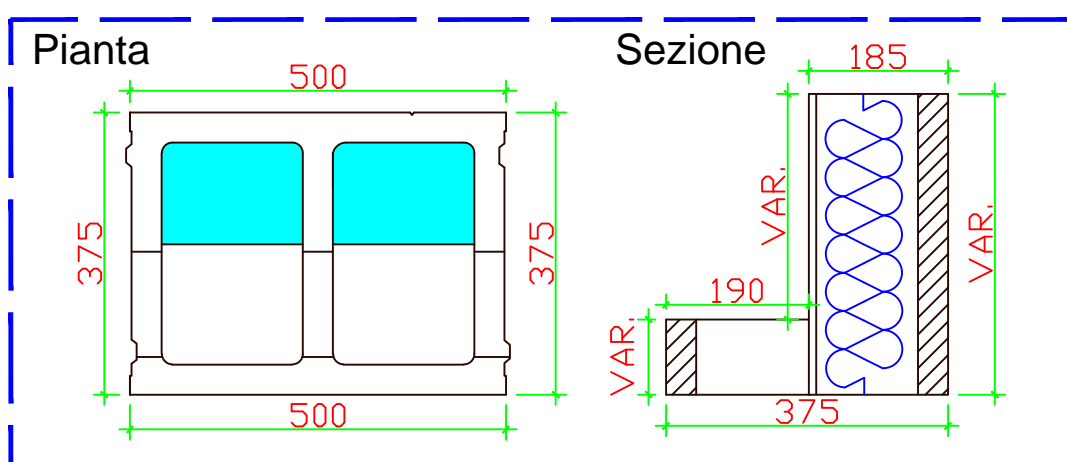


- Soletta di cls gettato in opera per solaio
- Cordolo perimetrale gettato in opera
- Staffa in Acciaio B450C
- Armatura longitudinale cordolo in Acciaio B450C
- Armatura longitudinale parete
- Blocco Cordolo

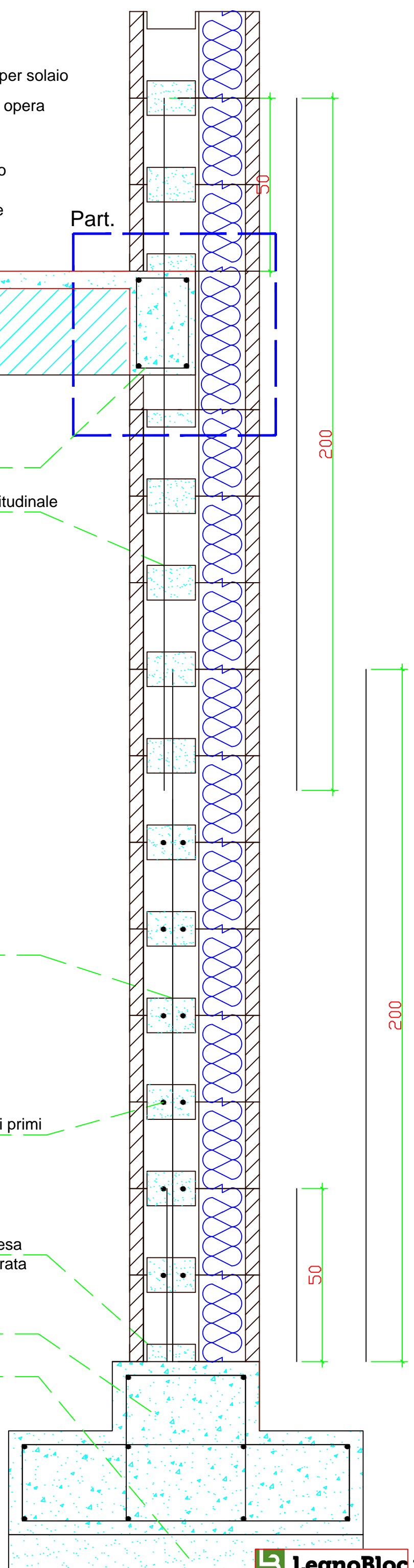


- Cordolo
- Seconda Armatura longitudinale

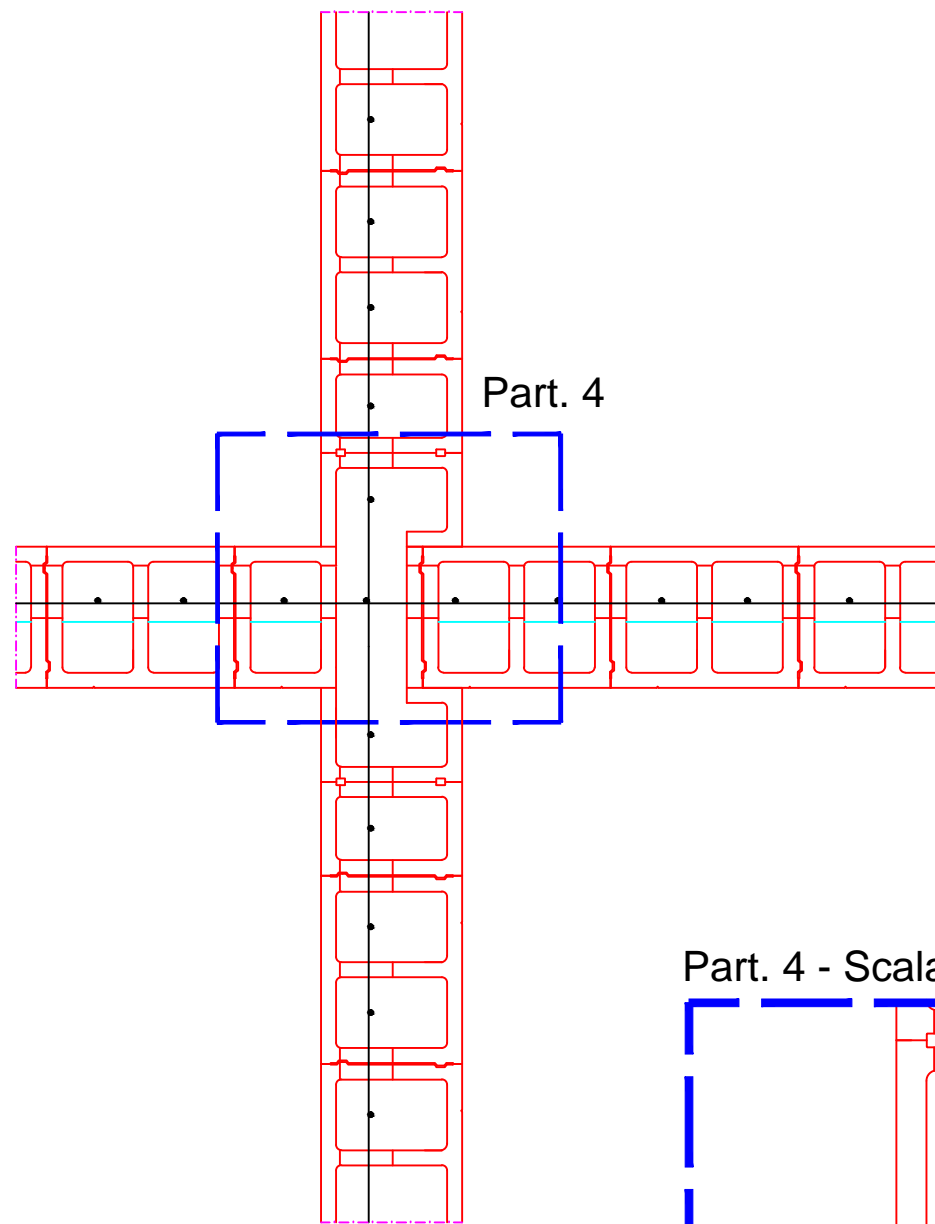
Blocco Cordolo - Scala 1:100



- Prima Armatura longitudinale
- Armatura longitudinale inserita nei primi 6 corsi
- Armatura in Acciaio B450C di ripresa annegata nella fondazione o ancorata ad essa per mezzo di resine epossidiche
- Fondazione
- Magrone

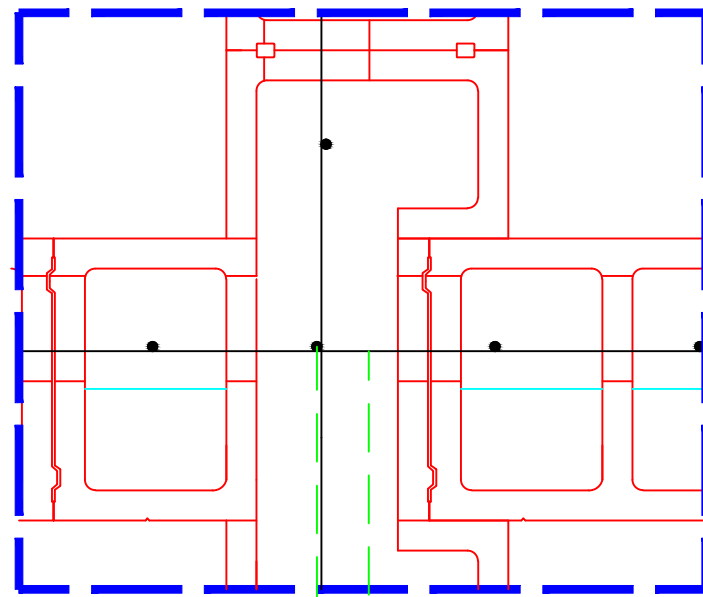


Nodo a quattro vie blocco 38 Portante con singola armatura- Scala 1:200



Part. 4

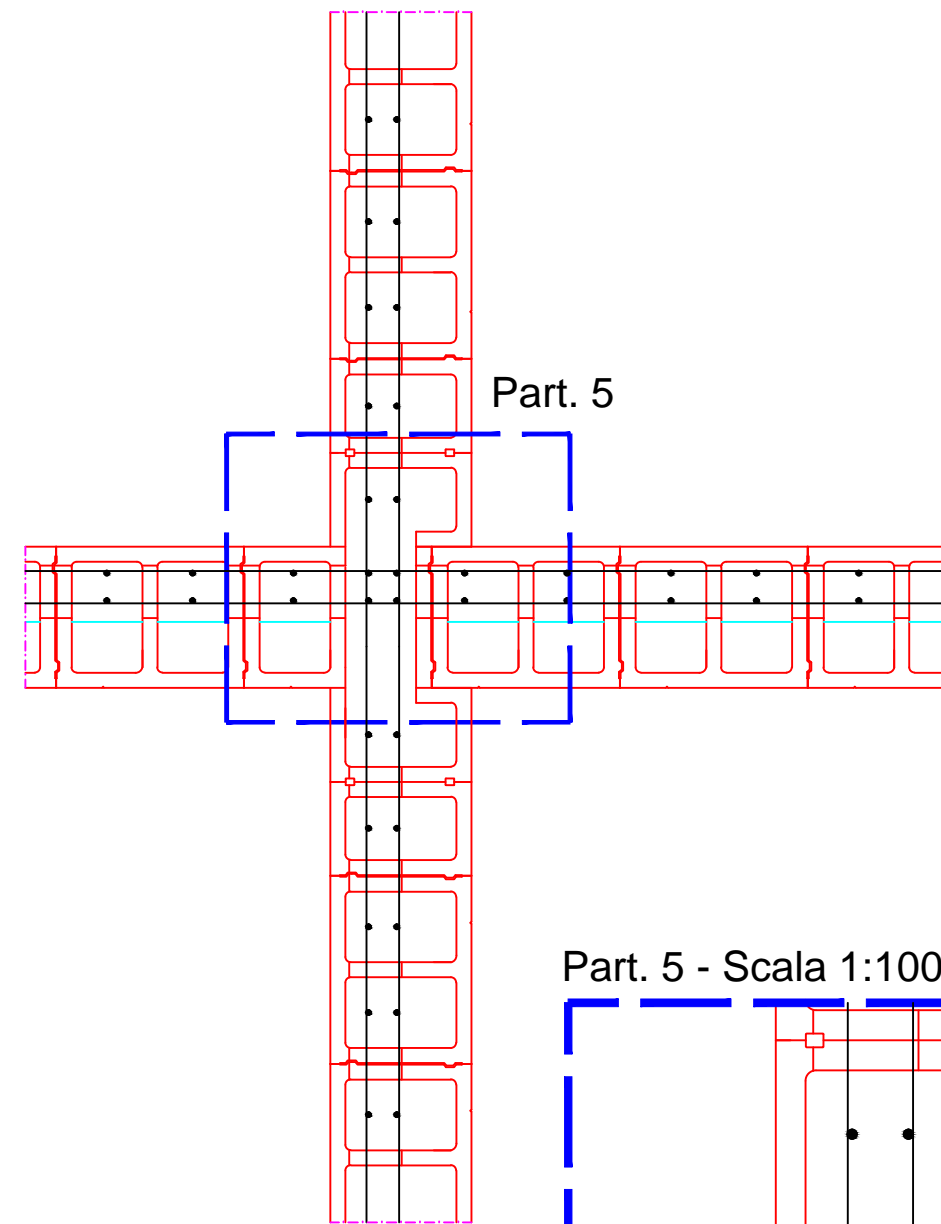
Part. 4 - Scala 1:100



Armatura verticale in acciaio B450C

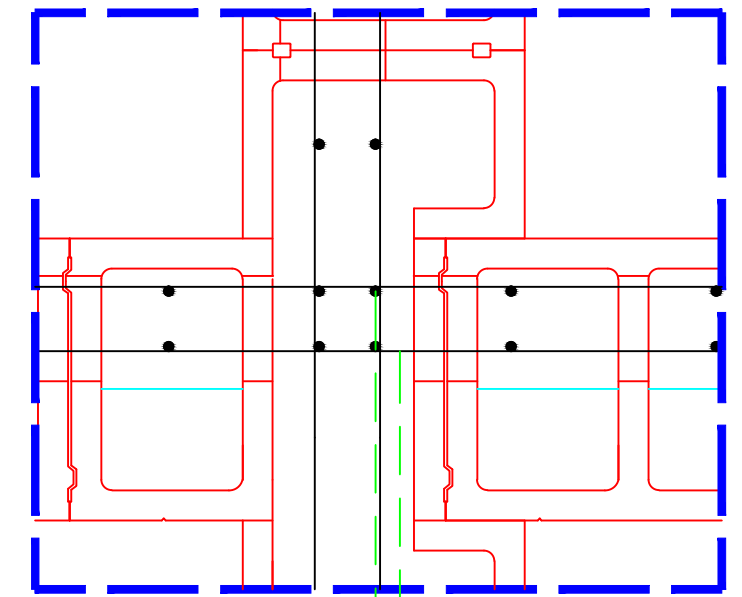
Armatura Longitudinale in acciaio B450C

Nodo a quattro vie blocco 38 Portante con singola armatura- Scala 1:200



Part. 5

Part. 5 - Scala 1:100



Armatura verticale in acciaio B450C

Armatura Longitudinale in acciaio B450C