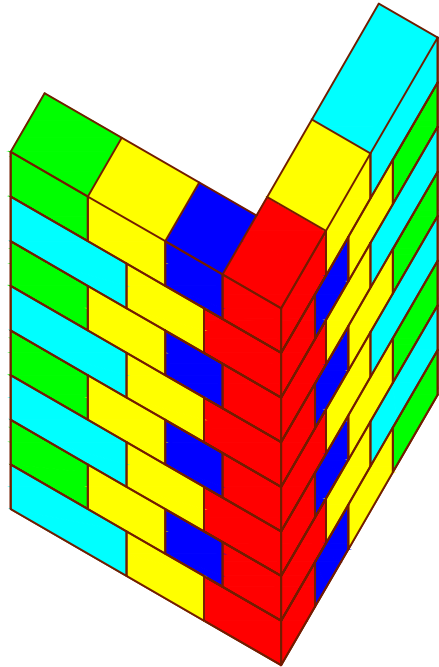


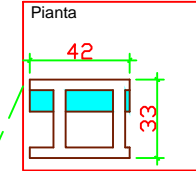
Blocco portante EG 33 "N" NEW Assonometria



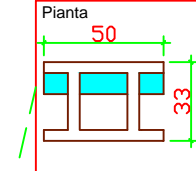
Blocco portante EG 33 "N" New Angolo esterno

Seconda fila

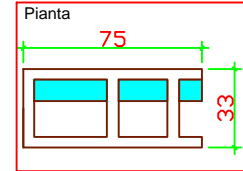
Blocco Angolo Pass - Scala 1:200



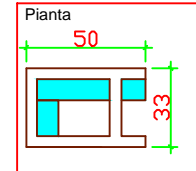
Blocco Normale - Scala 1:200



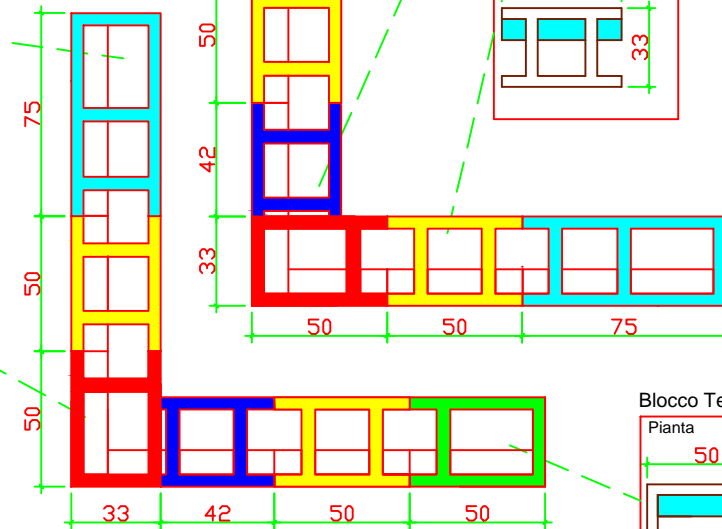
Blocco Tipo L - Scala 1:200



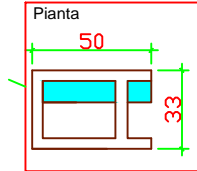
Blocco Universale - Scala 1:200



Prima fila



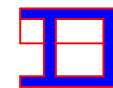
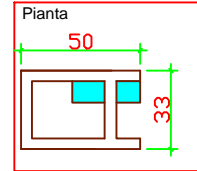
Blocco Testata - Scala 1:200



Blocco portante EG 33 "N" New Angolo Interno



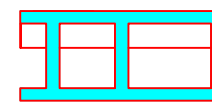
Blocco Universale - Scala 1:200



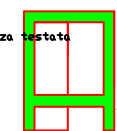
Blocco Angolo Pass



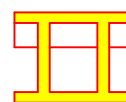
Blocco Universale esterno



Blocco Mezza testata



Blocco Spalla

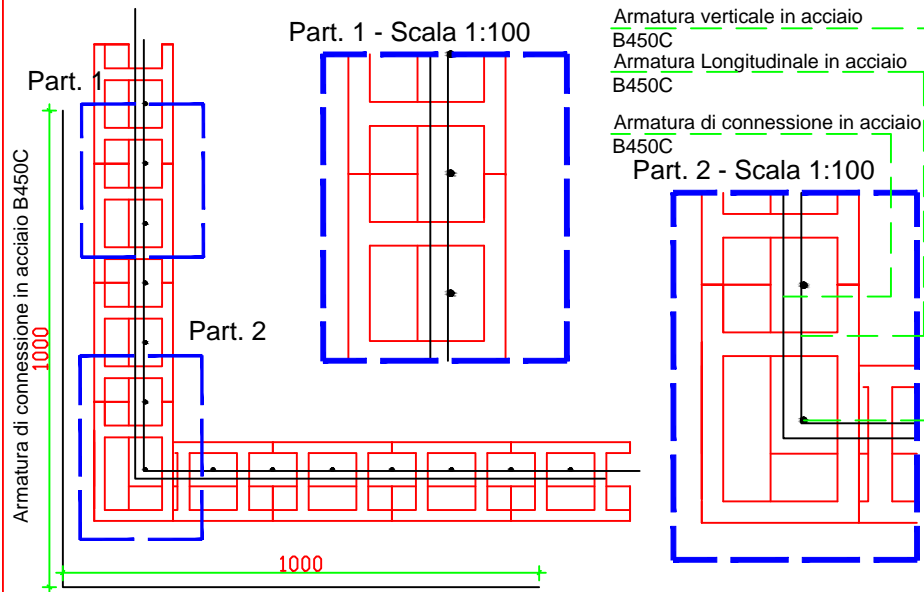


Blocco Normale

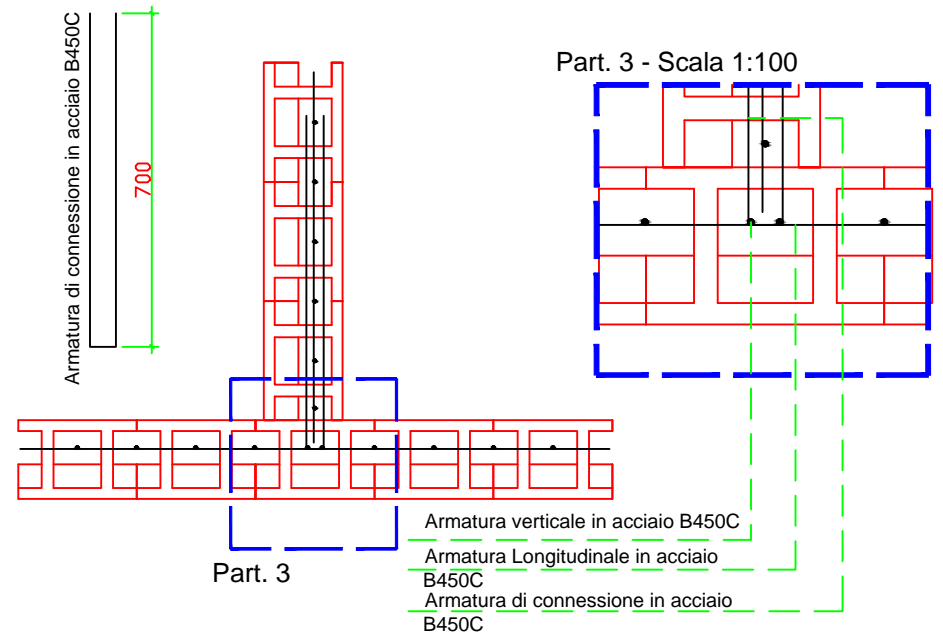


Blocco Universale interno

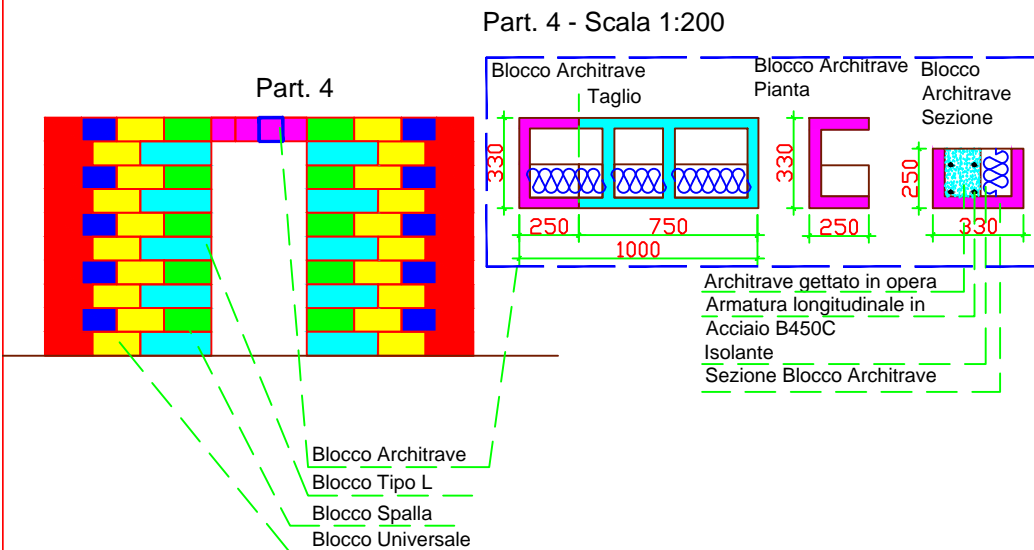
Armatura angolo EG 33 "N" New Portante - Scala 1:200



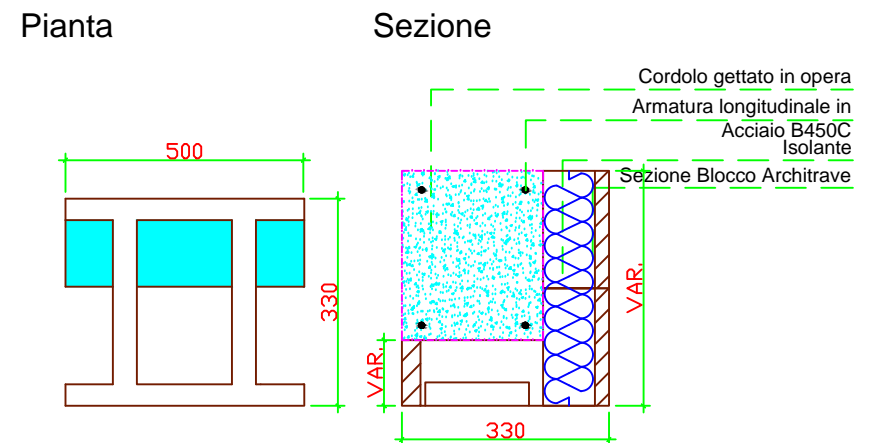
Nodo a tre vie EG 33 "N" New Portante - Scala 1:200



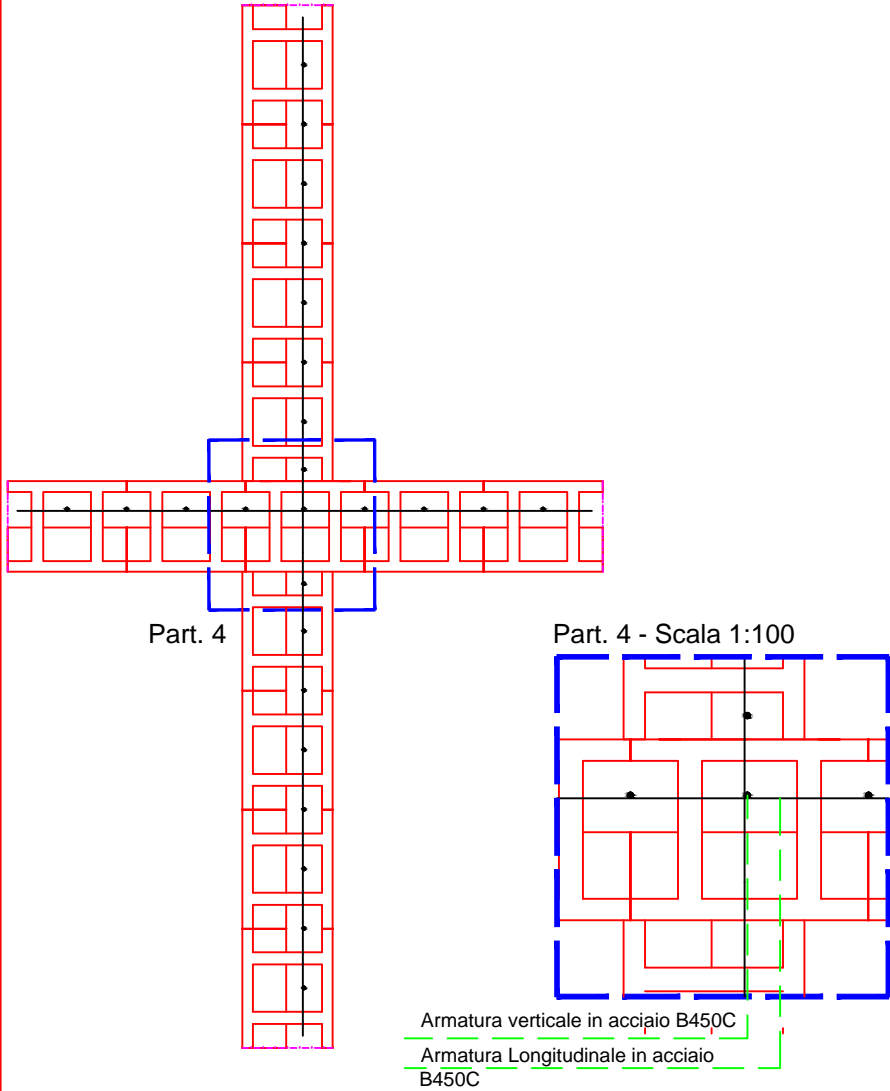
Architrave EG 33 "N" New Portante - Scala 1:100



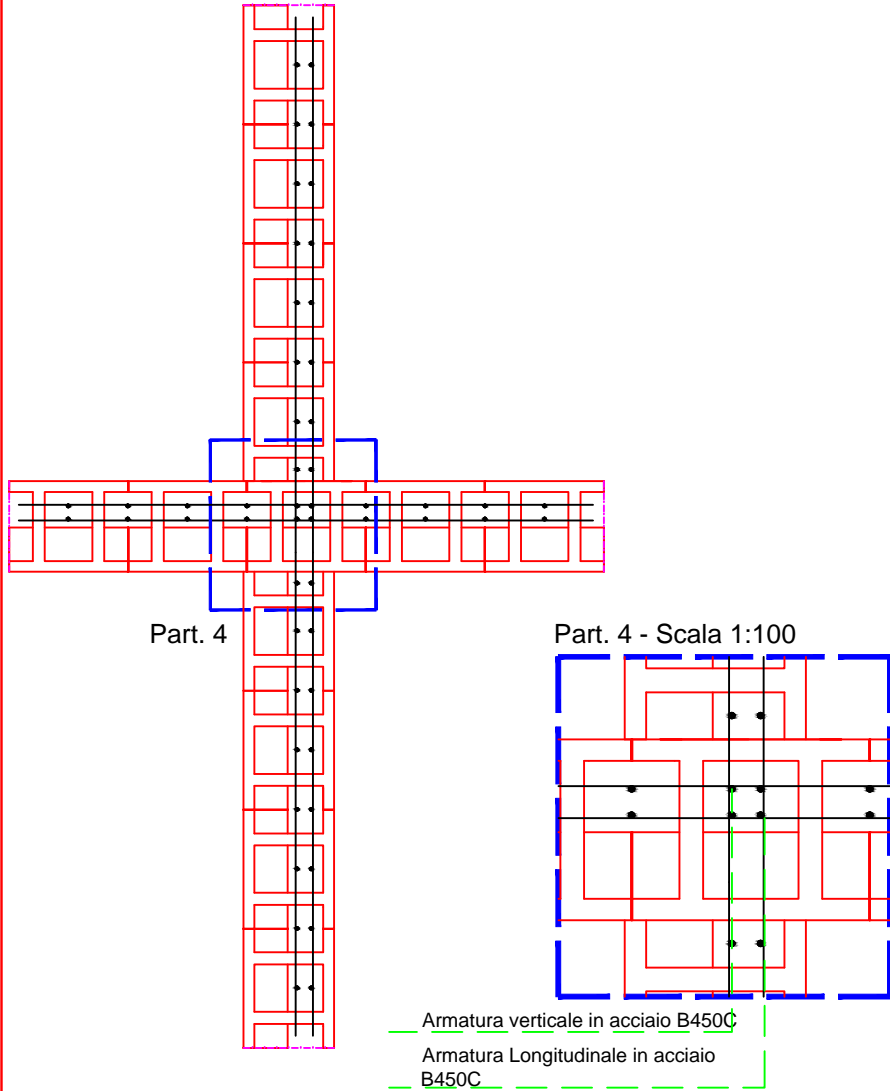
Cordolo EG 33 "N" New Portante - Scala 1:100



Nodo a quattro vie blocco EG 38 "N" New
Portante con singola armatura- Scala 1:200



Nodo a quattro vie blocco EG 38 "N" New
Portante con singola armatura- Scala 1:200



Cordolo EG 33 "N" New Portante

Particolare

