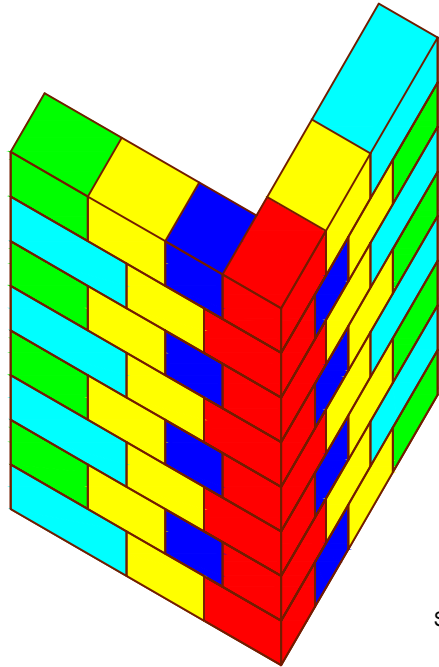
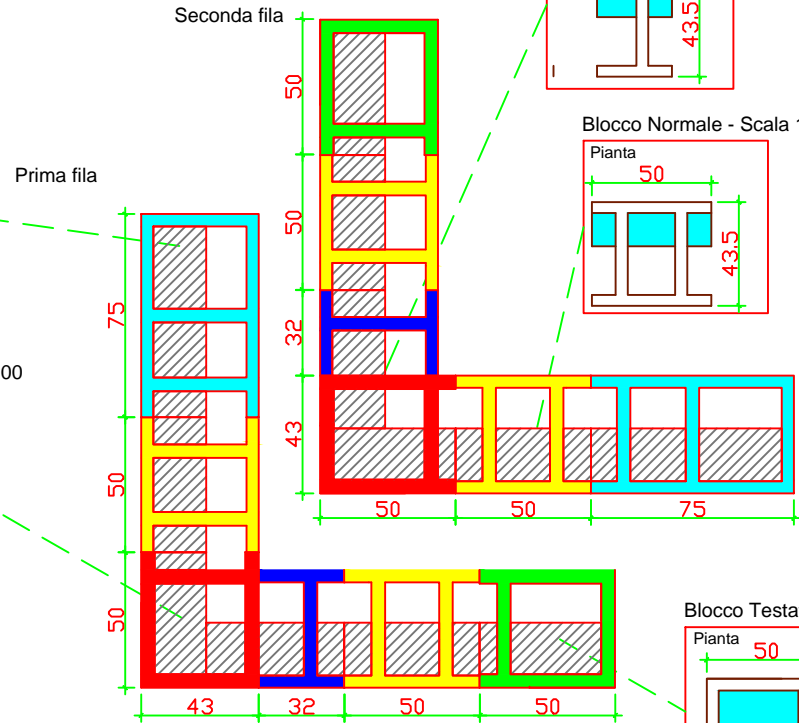


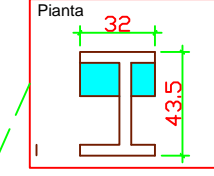
Blocco portante EG 43.5 "N" NEW Assonometria



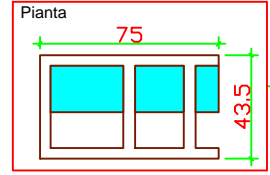
Blocco portante EG 43.5 "N" New Angolo Interno



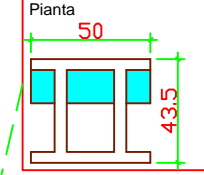
Blocco Angolo Pass - Scala 1:200



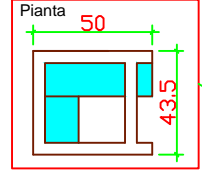
Blocco L - Scala 1:200



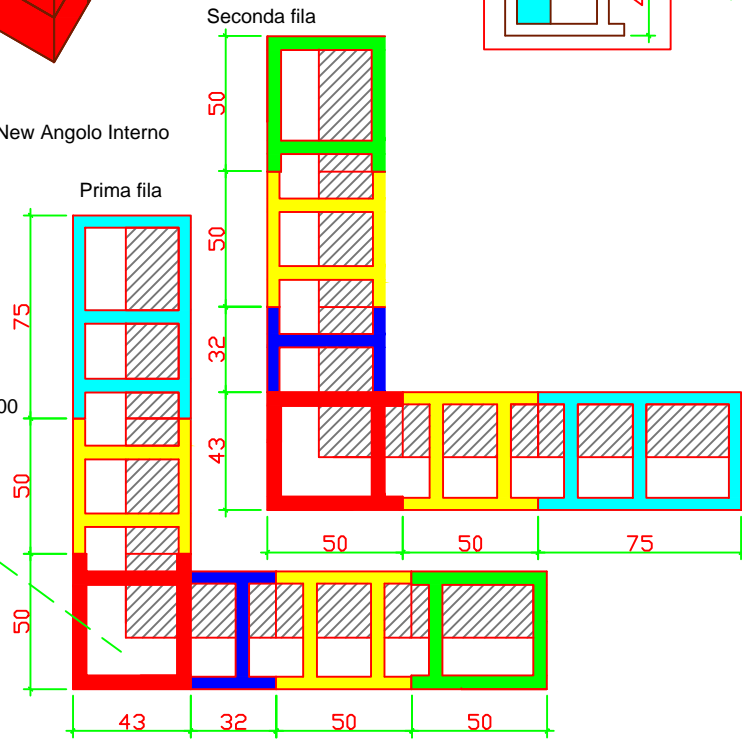
Blocco Normale - Scala 1:200



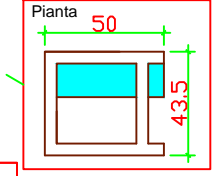
Blocco Universale - Scala 1:200



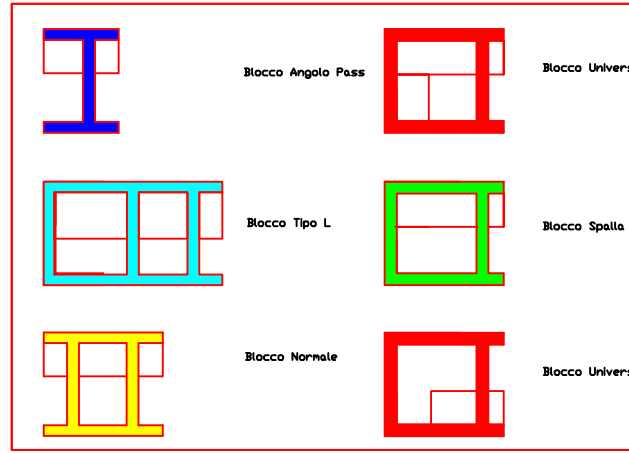
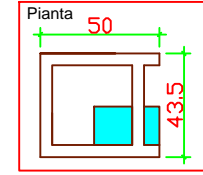
Blocco portante EG 43.5 "N" New Angolo Interno



Blocco Testata - Scala 1:200



Blocco Universale - Scala 1:200



Blocco Angolo Pass

Blocco Universale esterno

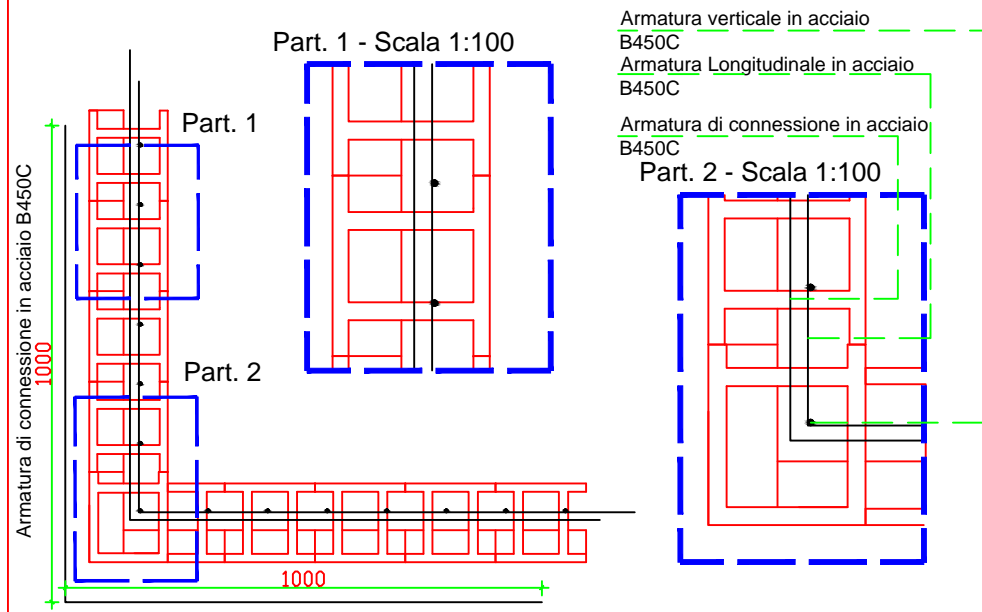
Blocco Tipo L

Blocco Spalla

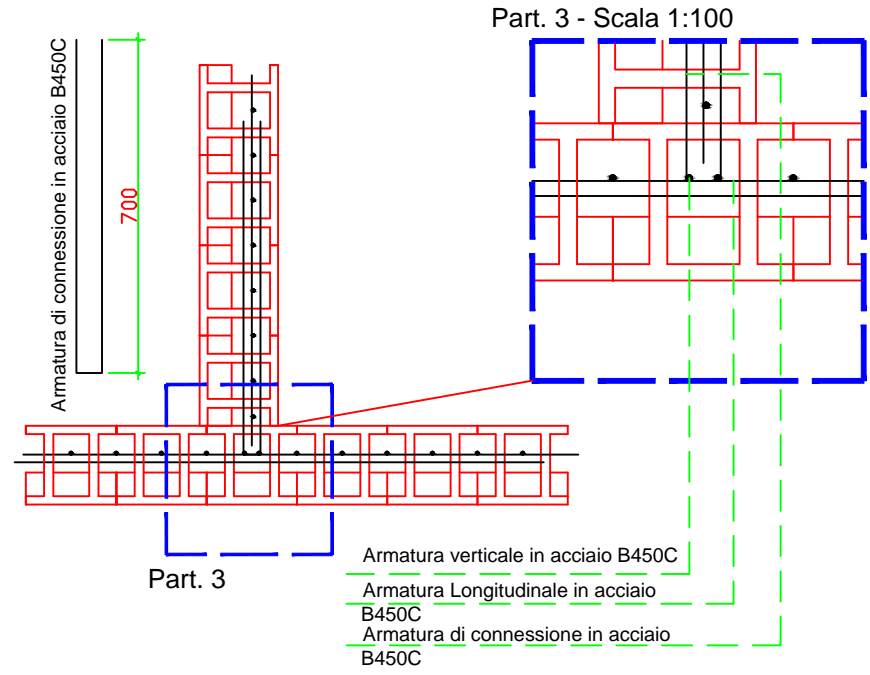
Blocco Normale

Blocco Universale Interno

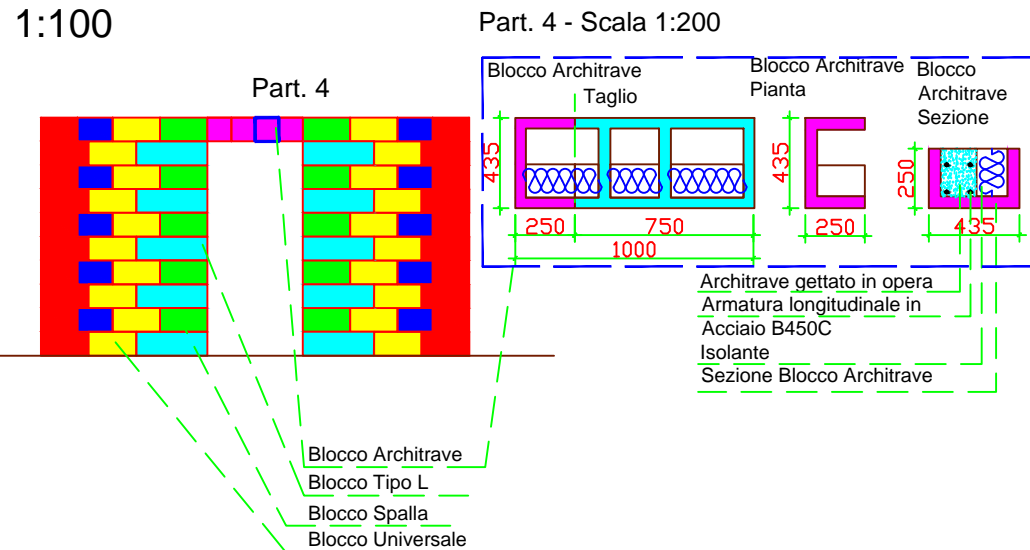
Armatura angolo EG 43.5 "N" New Portante - Scala 1:200



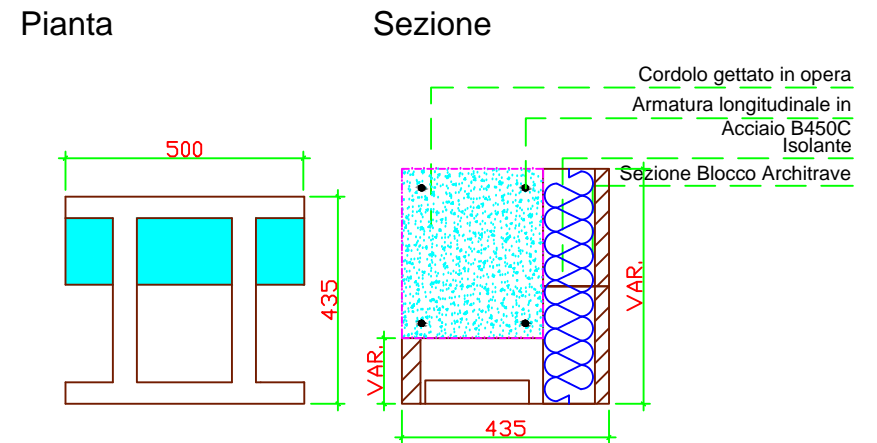
Nodo a tre vie EG 43.5 "N" New Portante - Scala 1:200



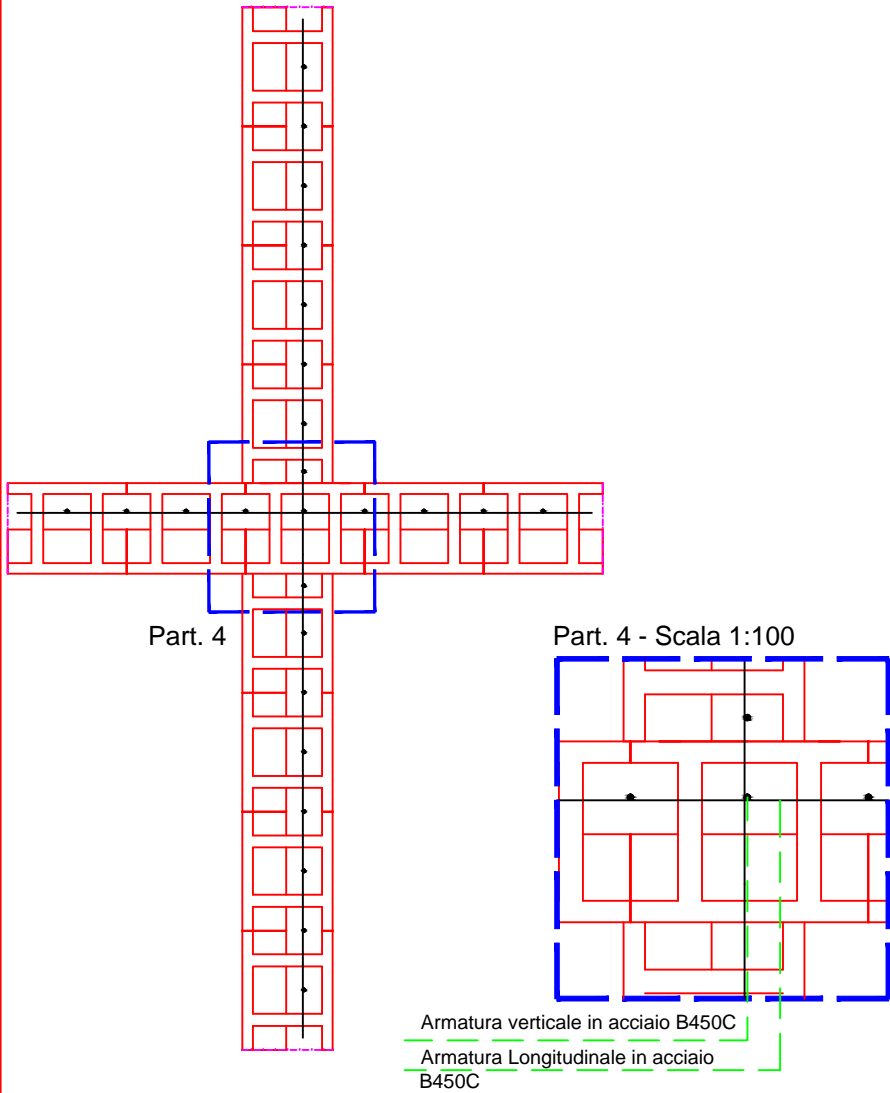
Architrave EG 43.5 "N" New Portante - Scala 1:100



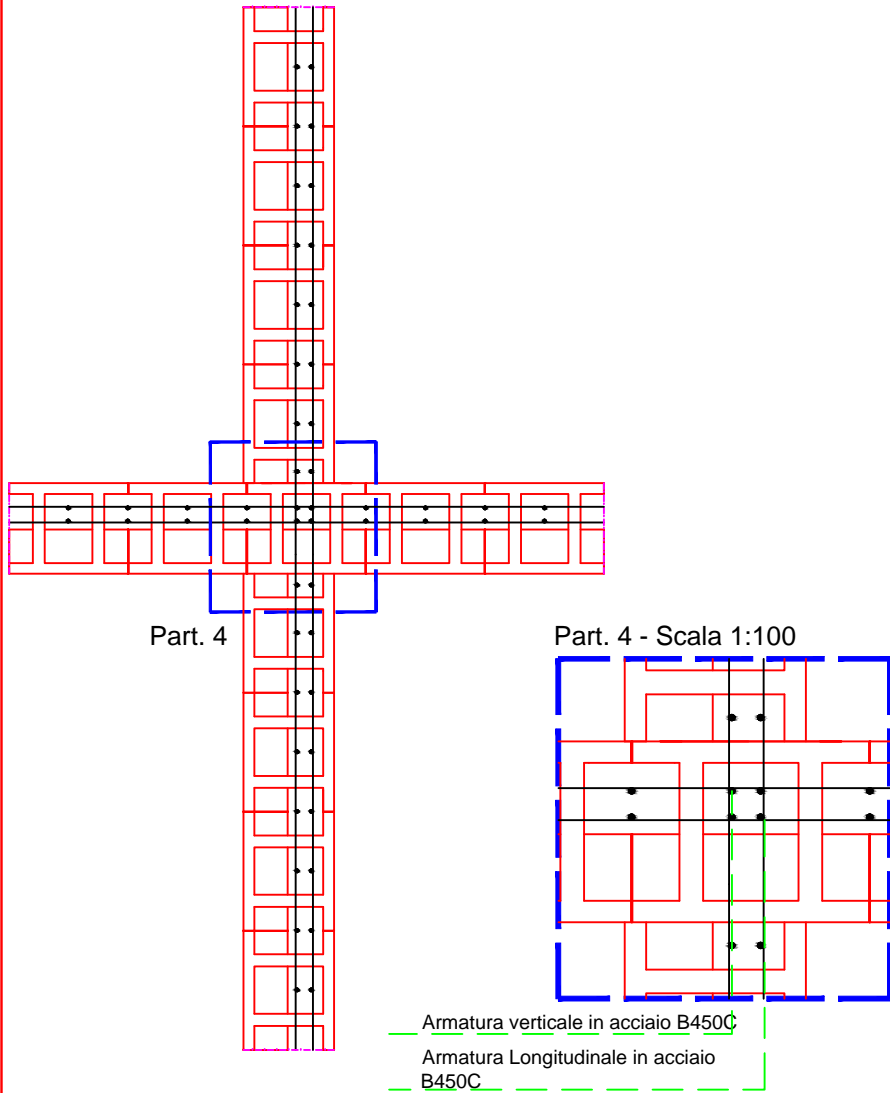
Cordolo EG 43.5 "N" New Portante - Scala 1:100



Nodo a quattro vie blocco EG 43.5 "N" New
Portante con singola armatura- Scala 1:200



Nodo a quattro vie blocco EG 43.5 "N" New
Portante con singola armatura- Scala 1:200



Cordolo EG 43.5 "N" New Portante

Part. - Scala 1:50

