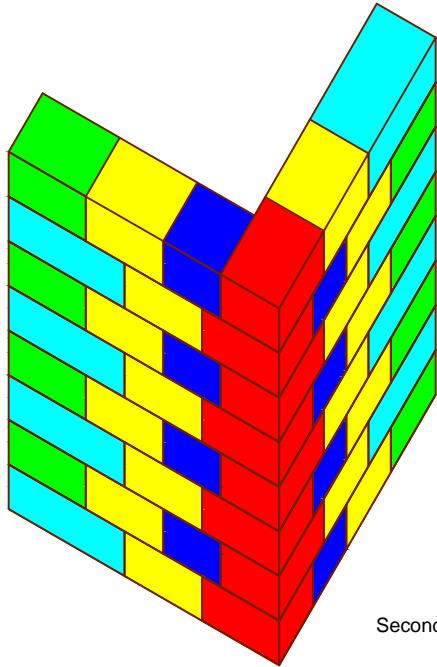
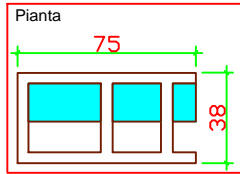


Blocco portante EG 38 "N" NEW Assonometria

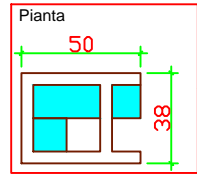


Blocco portante EG 38 "N" New Angolo esterno

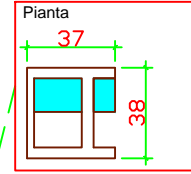
Blocco L - Scala 1:200



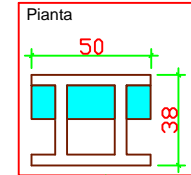
Blocco Universale - Scala 1:200



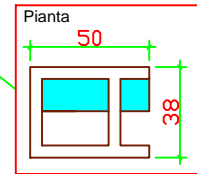
Blocco Angolo Pass - Scala 1:200



Blocco Normale - Scala 1:200



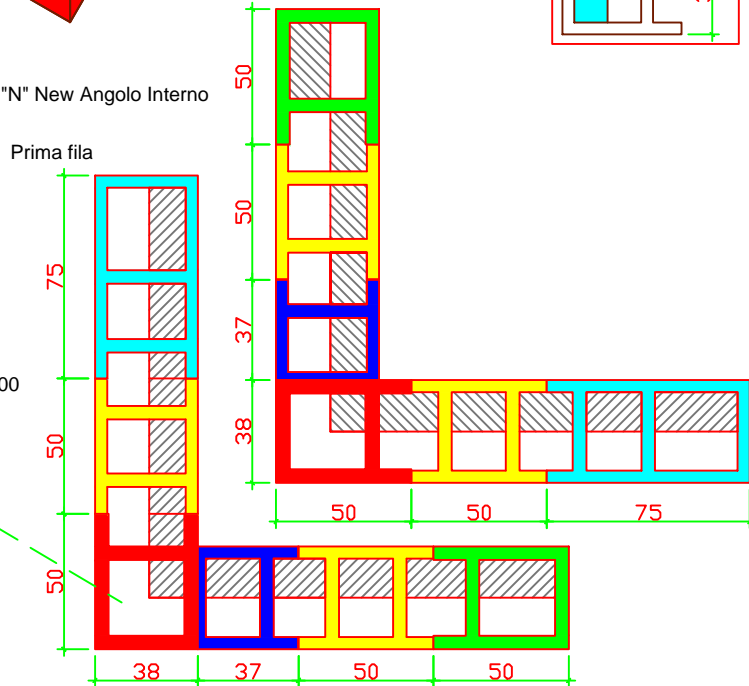
Blocco Testata - Scala 1:200



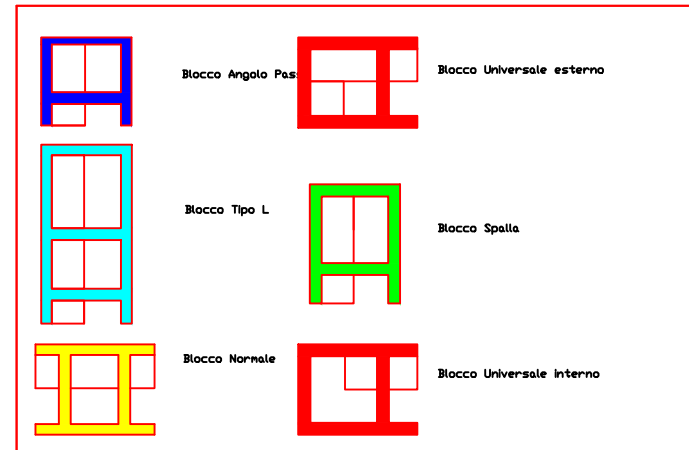
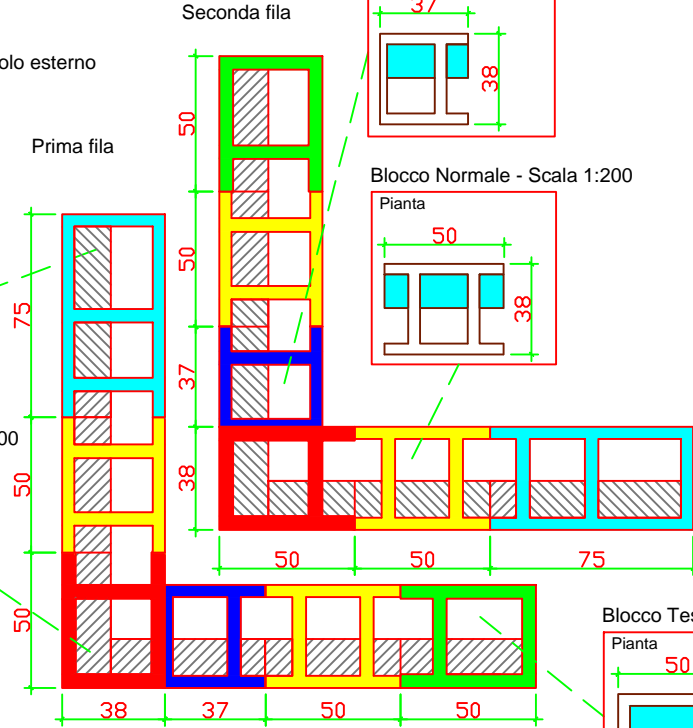
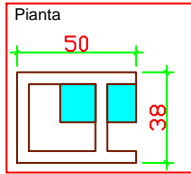
Blocco portante EG 38 "N" New Angolo Interno

Seconda fila

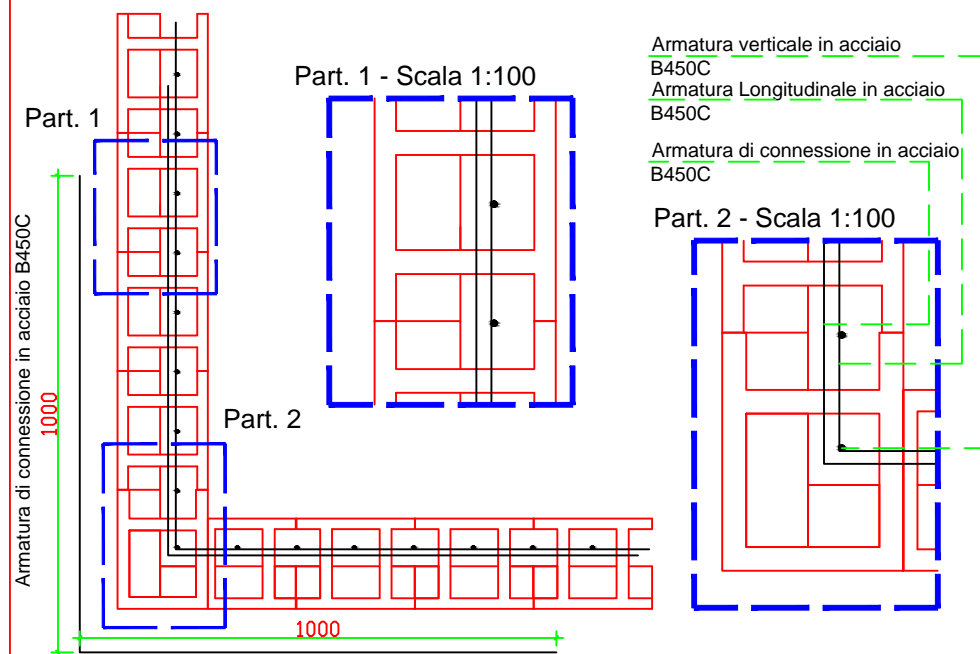
Prima fila



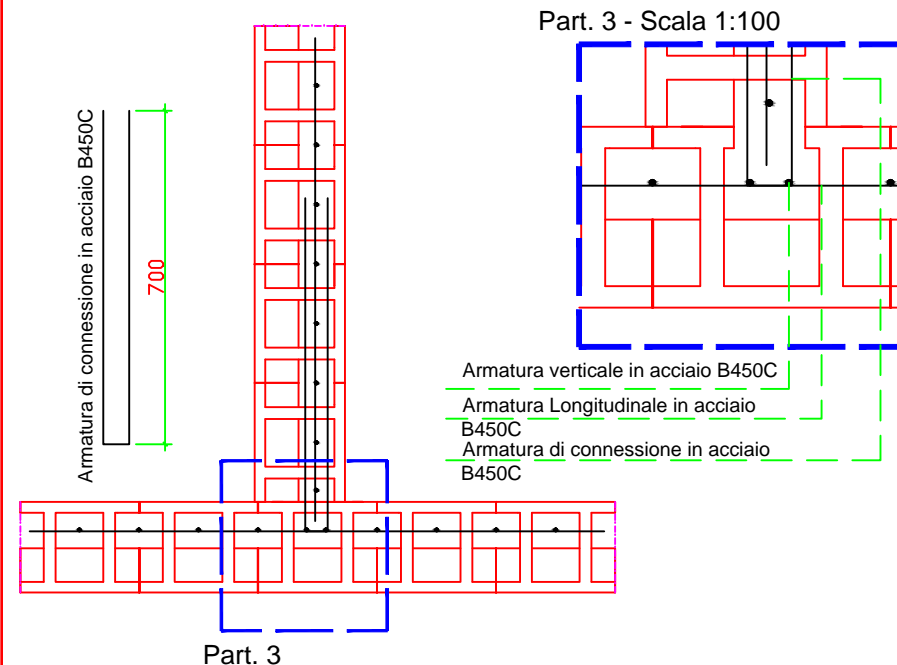
Blocco Universale - Scala 1:200



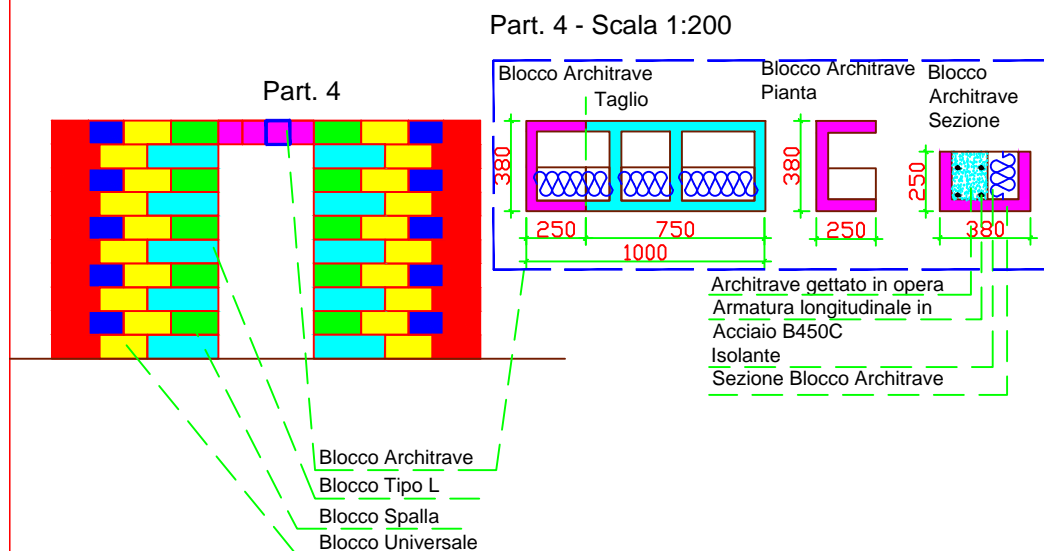
### Armatura angolo EG 38 "N" New Portante - Scala 1:200



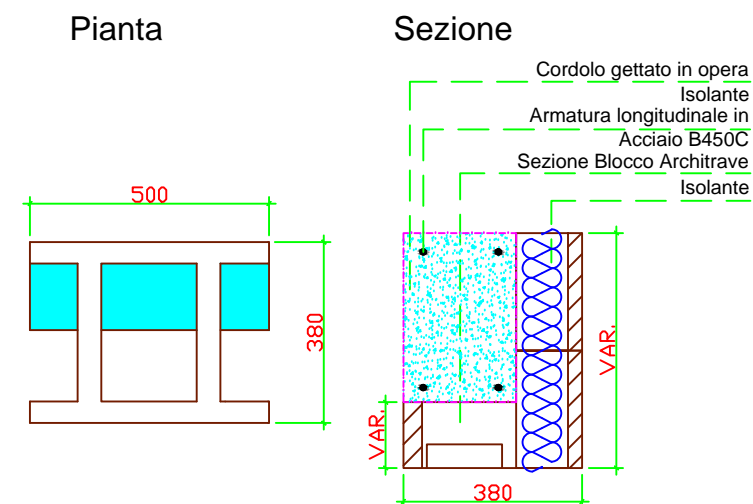
### Nodo a tre vie EG 38 "N" New Portante - Scala 1:200



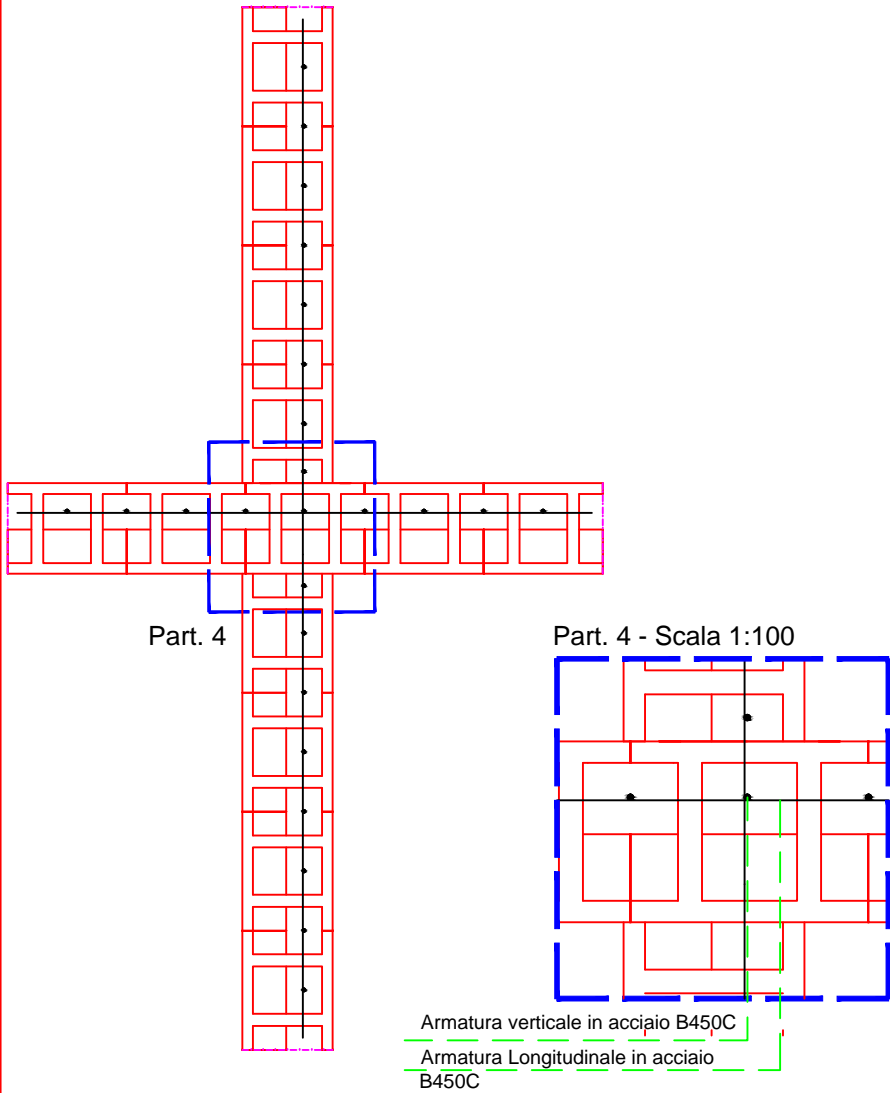
### Architrave EG 38 "N" New Portante - Scala 1:100



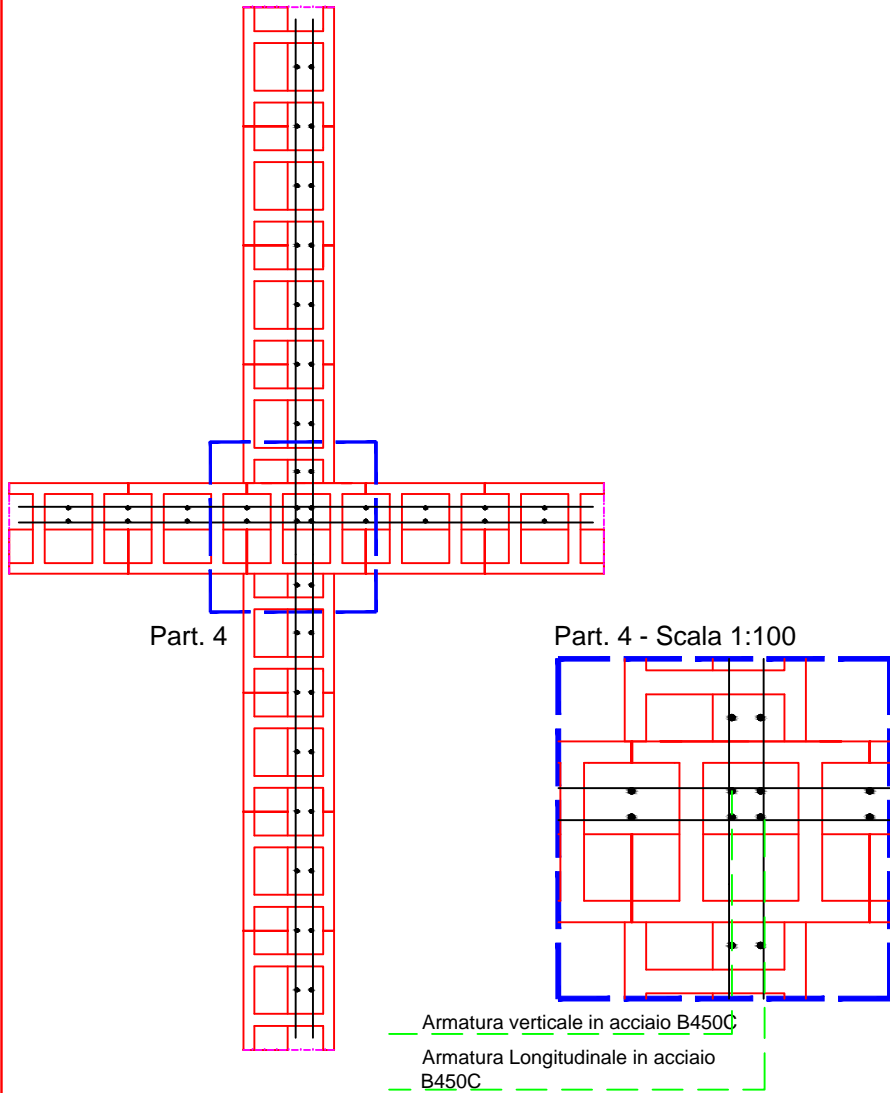
### Cordolo EG 38 "N" New Portante - Scala 1:100



Nodo a quattro vie blocco EG 38 "N" New  
Portante con singola armatura- Scala 1:200



Nodo a quattro vie blocco EG 38 "N" New  
Portante con singola armatura- Scala 1:200



# Cordolo EG 38 "N" New Portante

Part. - Scala 1:50

