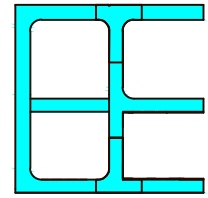
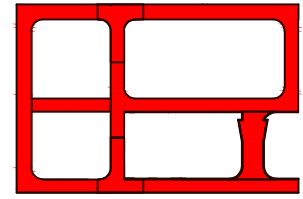


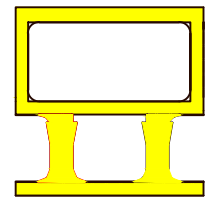
Blocco portante 50 Angolo esterno



Mezzo blocco



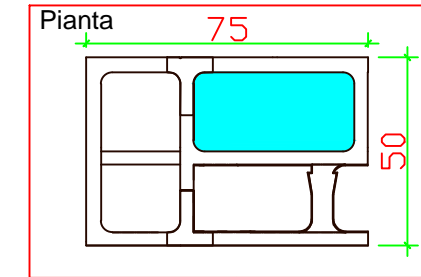
Blocco Universale



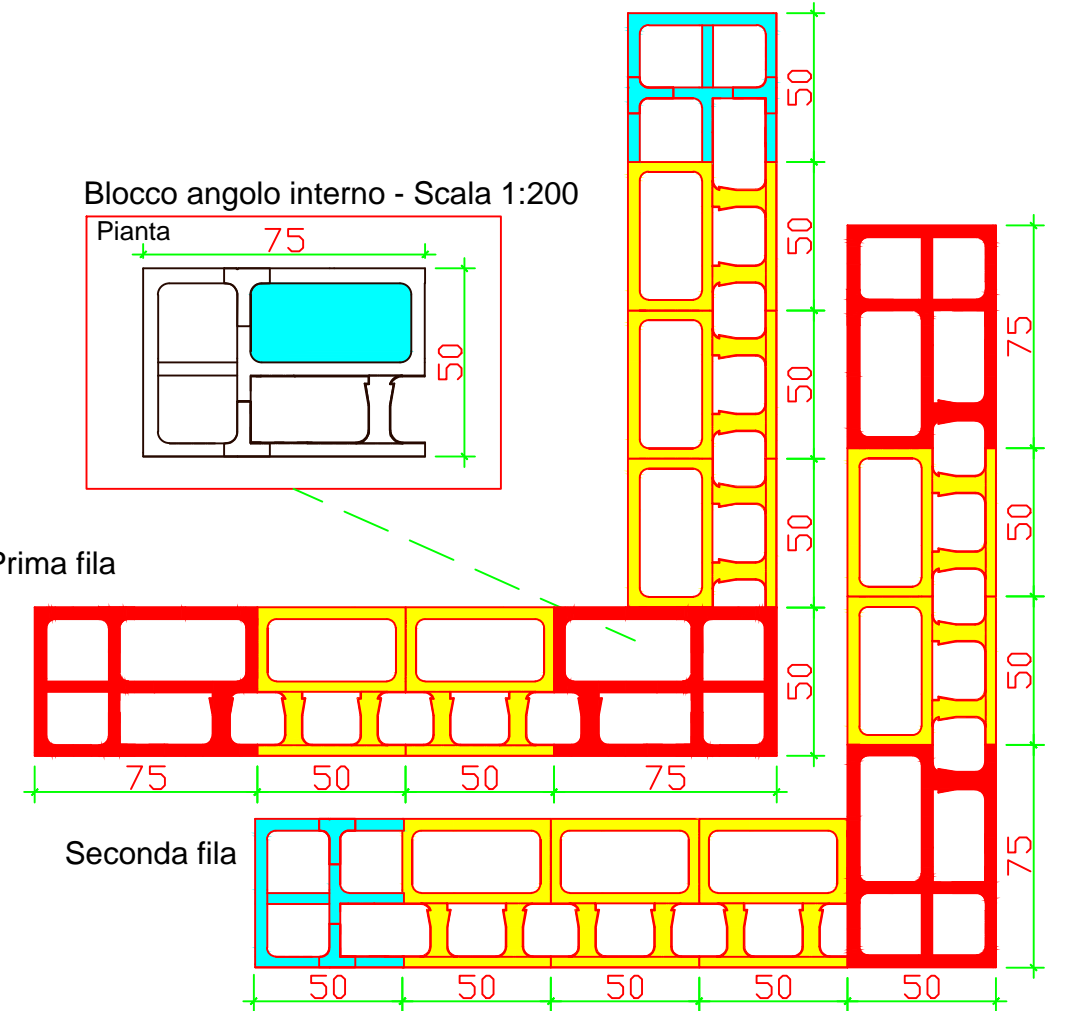
Blocco Normale

Blocco portante 50 Angolo interno

Blocco angolo interno - Scala 1:200

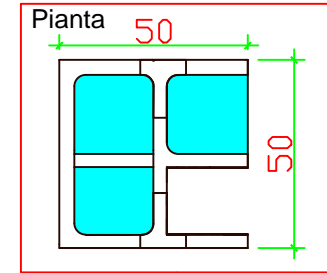


Prima fila

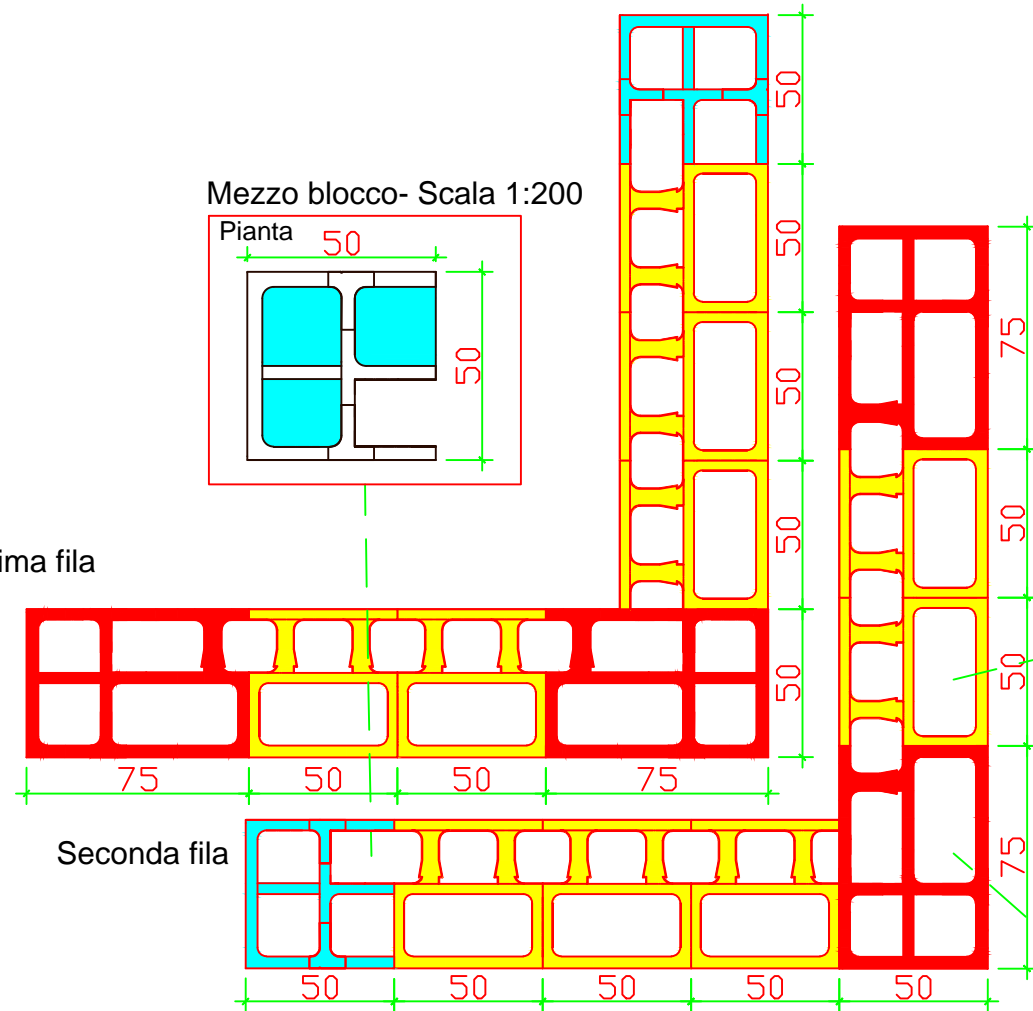


Seconda fila

Mezzo blocco- Scala 1:200

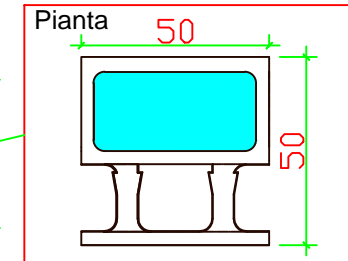


Prima fila

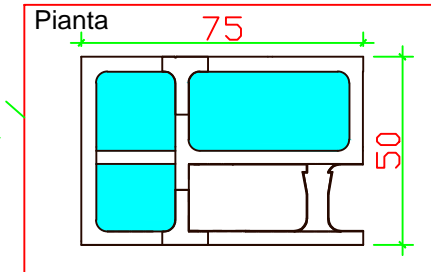


Seconda fila

Blocco Normale- Scala 1:200

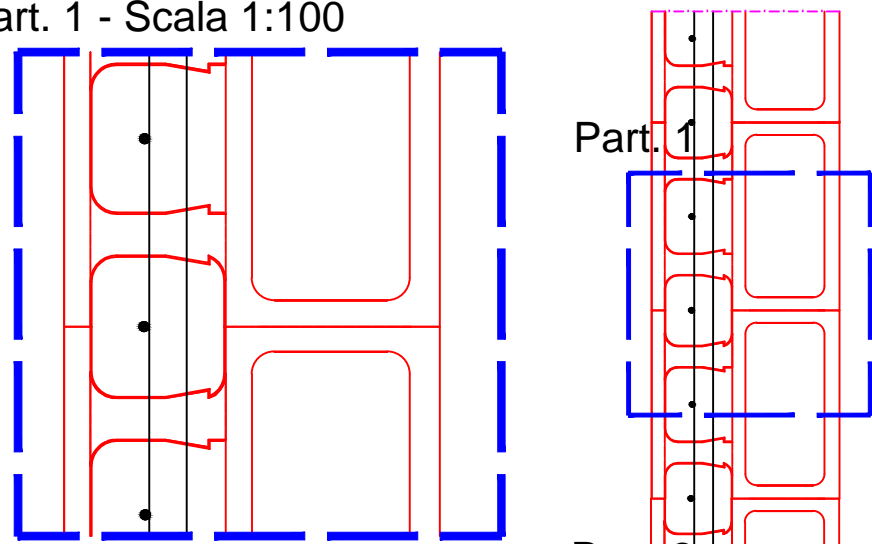


Blocco angolo esterno- Scala 1:200



## Armatura angolo 50 Portante - Scala 1:200

Part. 1 - Scala 1:100



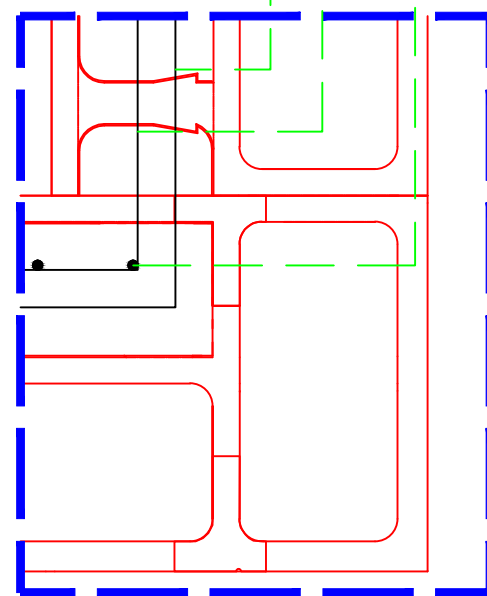
Part. 1

Part. 2

Armatura verticale in acciaio  
B450C  
Armatura Longitudinale in acciaio  
B450C  
Armatura di connessione in acciaio  
B450C

Armatura di connessione in acciaio B450C

Part. 2 - Scala 1:100



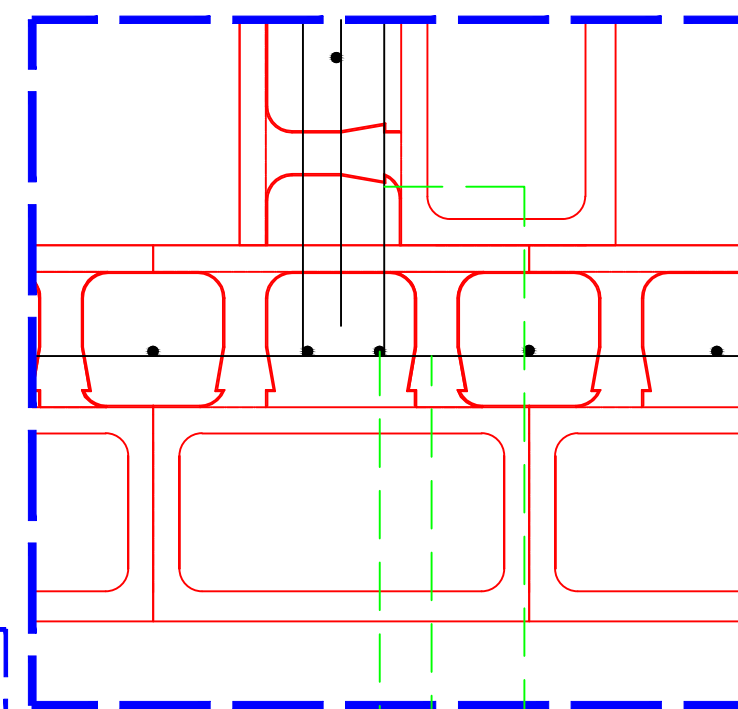
## Nodo a tre vie angolo 50 Portante - Scala 1:200

Part. 3 - Scala 1:100

Armatura di connessione in acciaio B450C

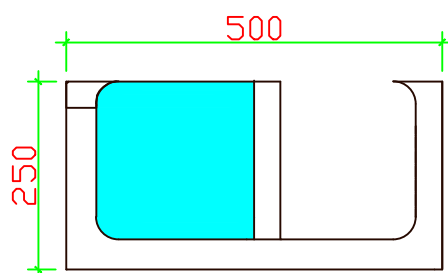
Part. 3

Armatura verticale in acciaio B450C  
Armatura Longitudinale in acciaio  
B450C  
Armatura di connessione in acciaio  
B450C

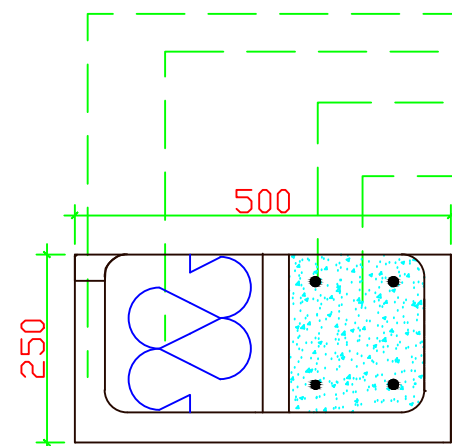


## Architrave 50 Portante - Scala 1:100

Pianta



Sezione

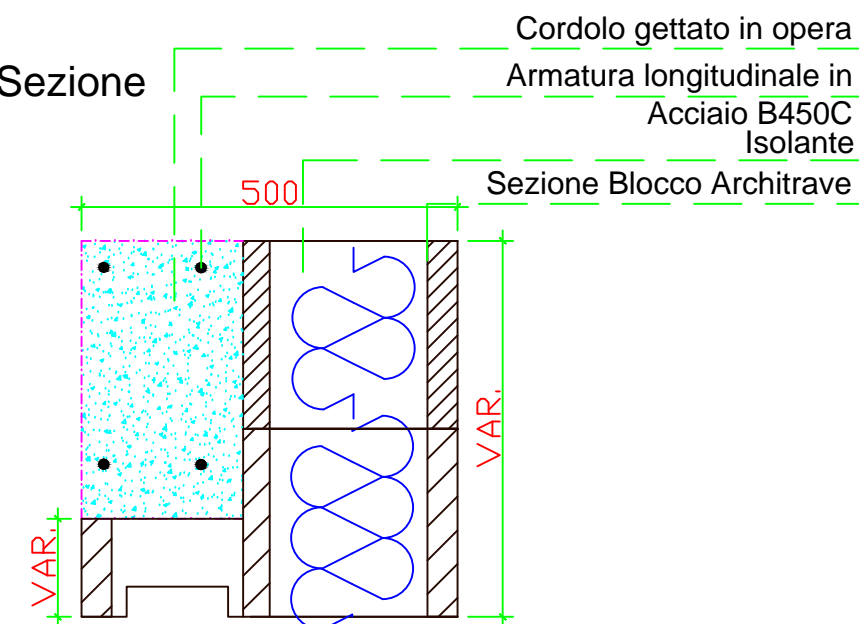


Sezione Blocco Architrave  
Isolante

Armatura longitudinale in  
Acciaio B450C  
Architrave gettato in opera

## Cordolo 50 Portante - Scala 1:100

Sezione



Cordolo gettato in opera  
Armatura longitudinale in  
Acciaio B450C  
Isolante  
Sezione Blocco Architrave

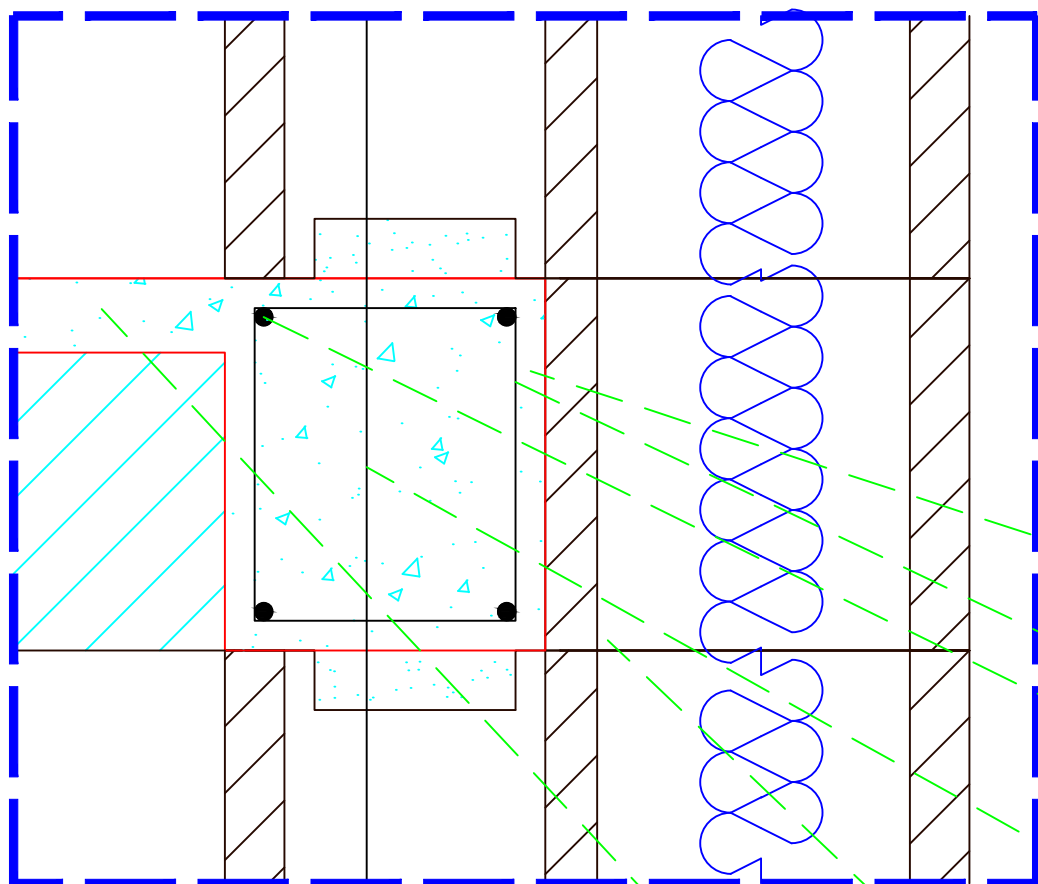
Cordolo

Seconda Armatura longitudinale

Part.

# Cordolo 50 Portante

Part. - Scala 1:50



Cordolo perimetrale gettato in opera

Staffa in Acciaio B450C

Armatura longitudinale cordolo in Acciaio B450C

Armatura longitudinale parete

Blocco Cordolo

## Blocco Cordolo - Scala 1:100

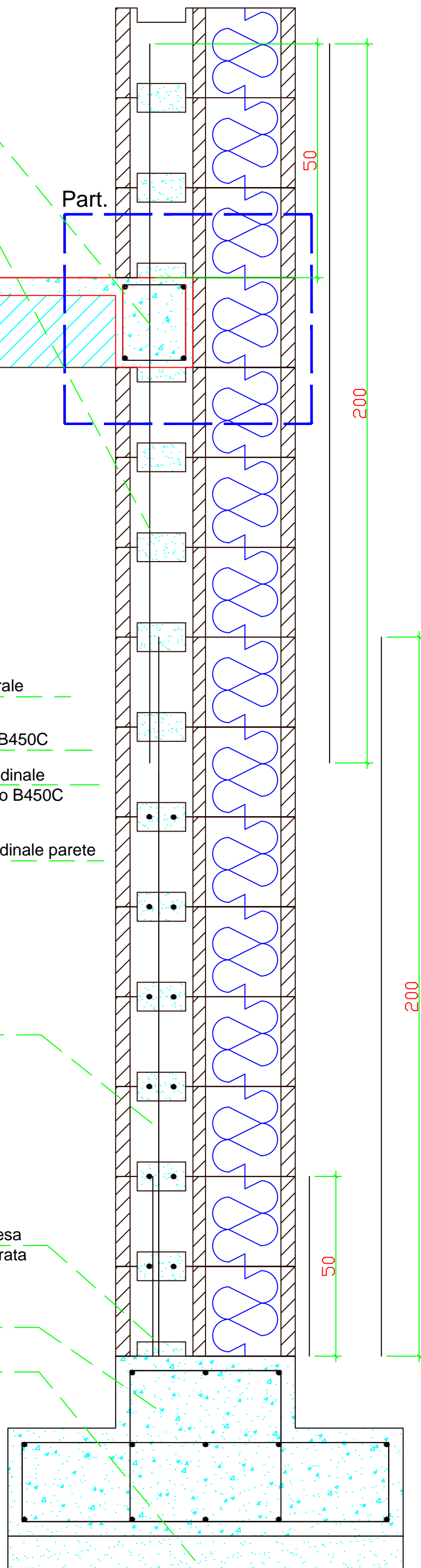
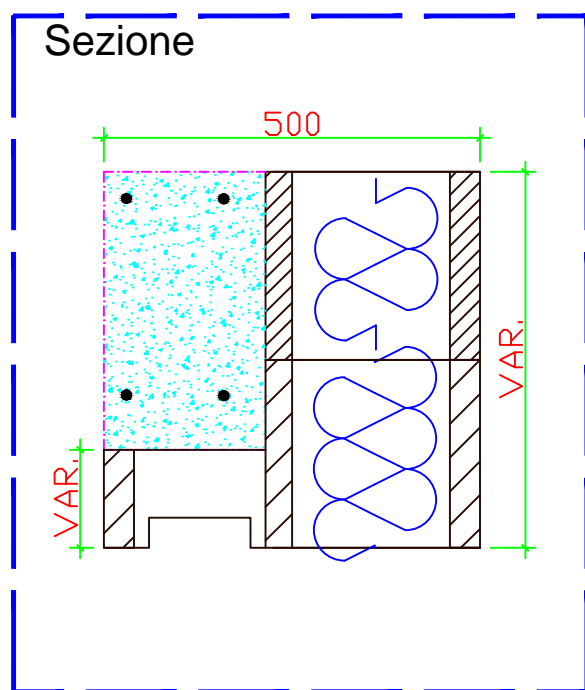
Soletta di cls gettato in opera per solaio

Prima Armatura longitudinale

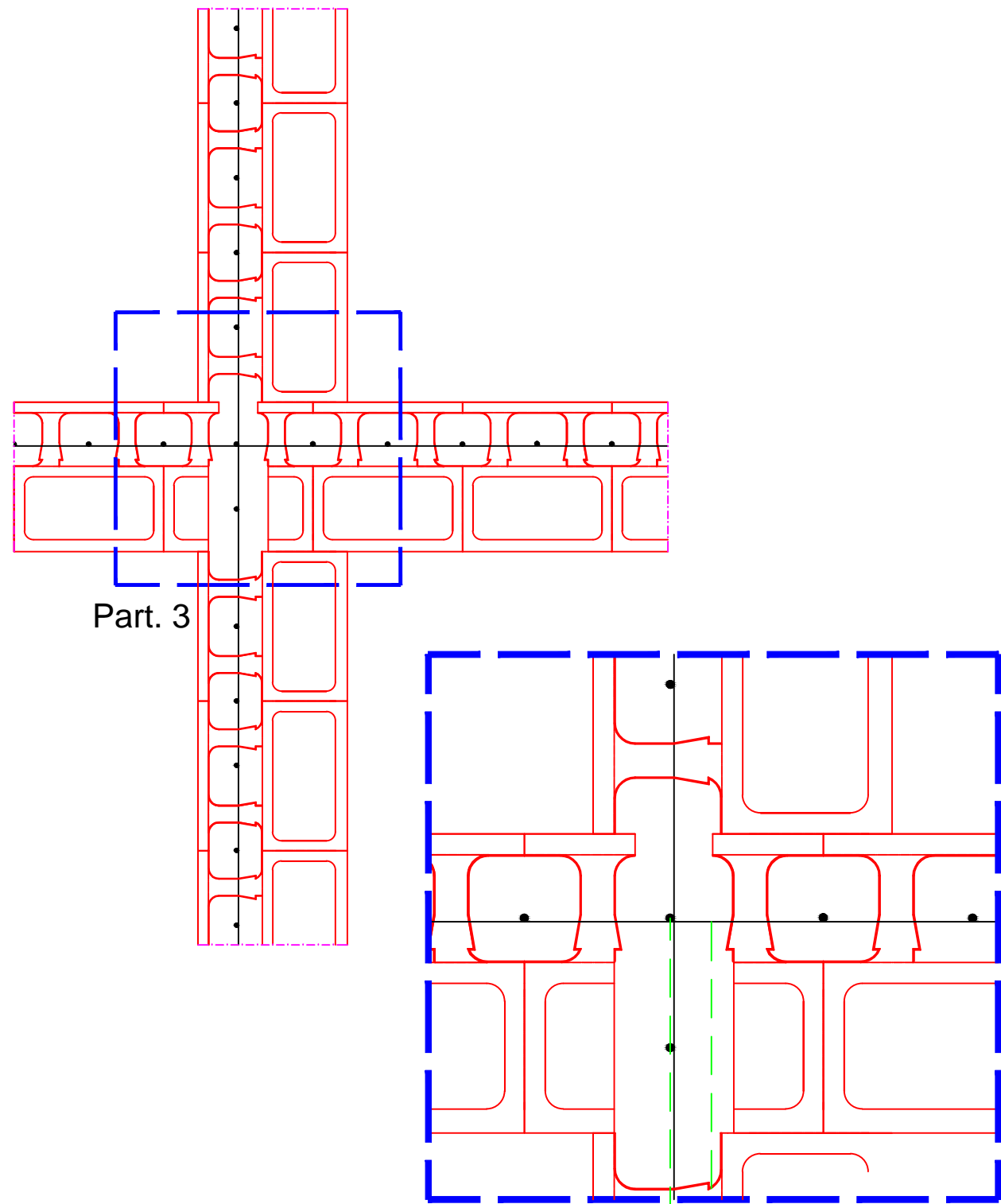
Armatura in Acciaio B450C di ripresa annegata nella fondazione o ancorata ad essa per mezzo di resine epossidiche

Fondazione

Magrone

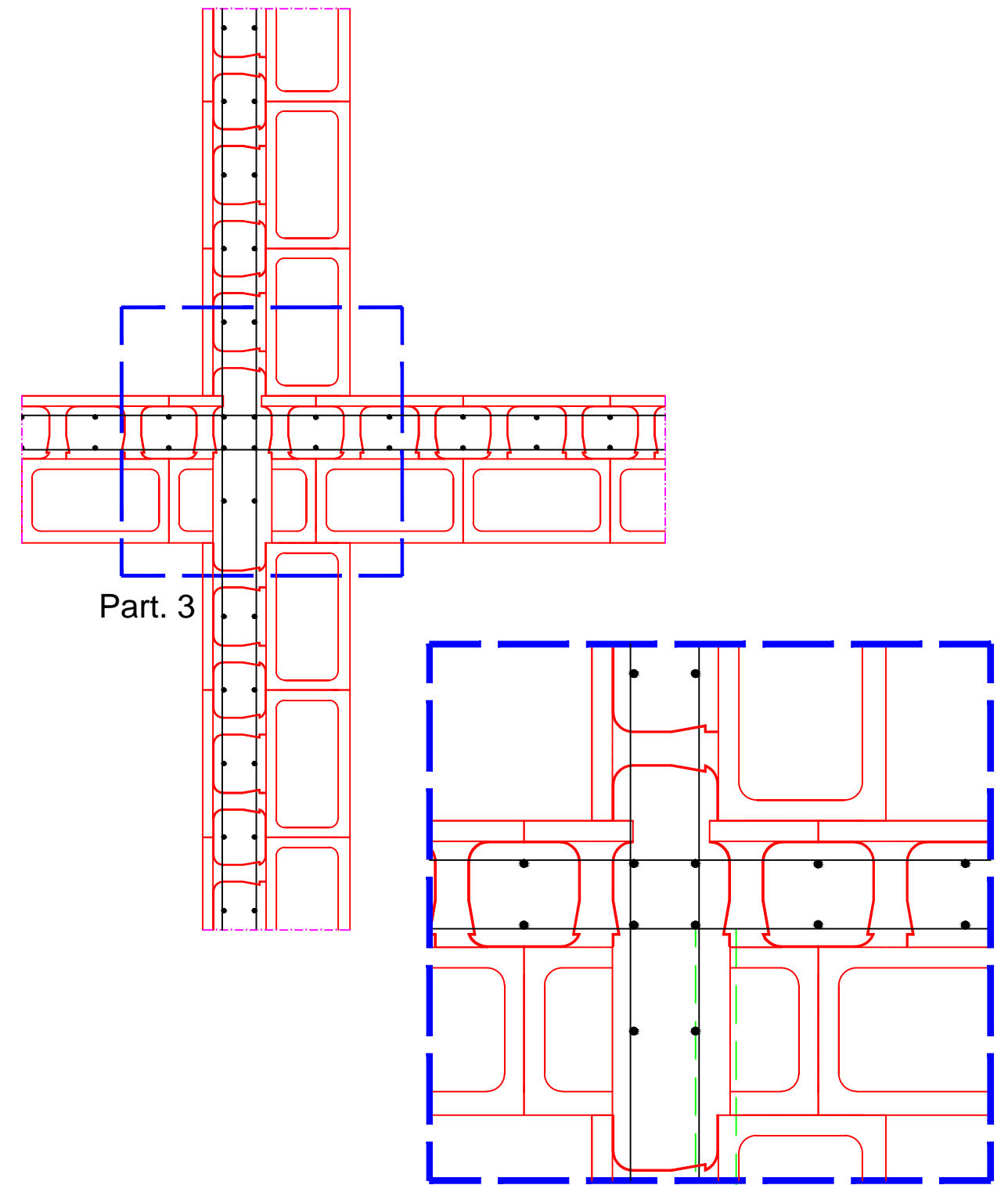


Nodo a quattro vie Superblocco 50 Portante con  
singola armatura- Scala 1:200



Armatura verticale in acciaio B450C  
Armatura Longitudinale in acciaio  
B450C

Nodo a quattro vie Superblocco 50 Portante con  
singola armatura- Scala 1:200



Armatura verticale in acciaio B450C  
Armatura Longitudinale in acciaio  
B450C